

METHAMPHETAMINE

Recreational Pharmaceuticals



Copyright 1999 Publishers Group
www.streetdrugs.org

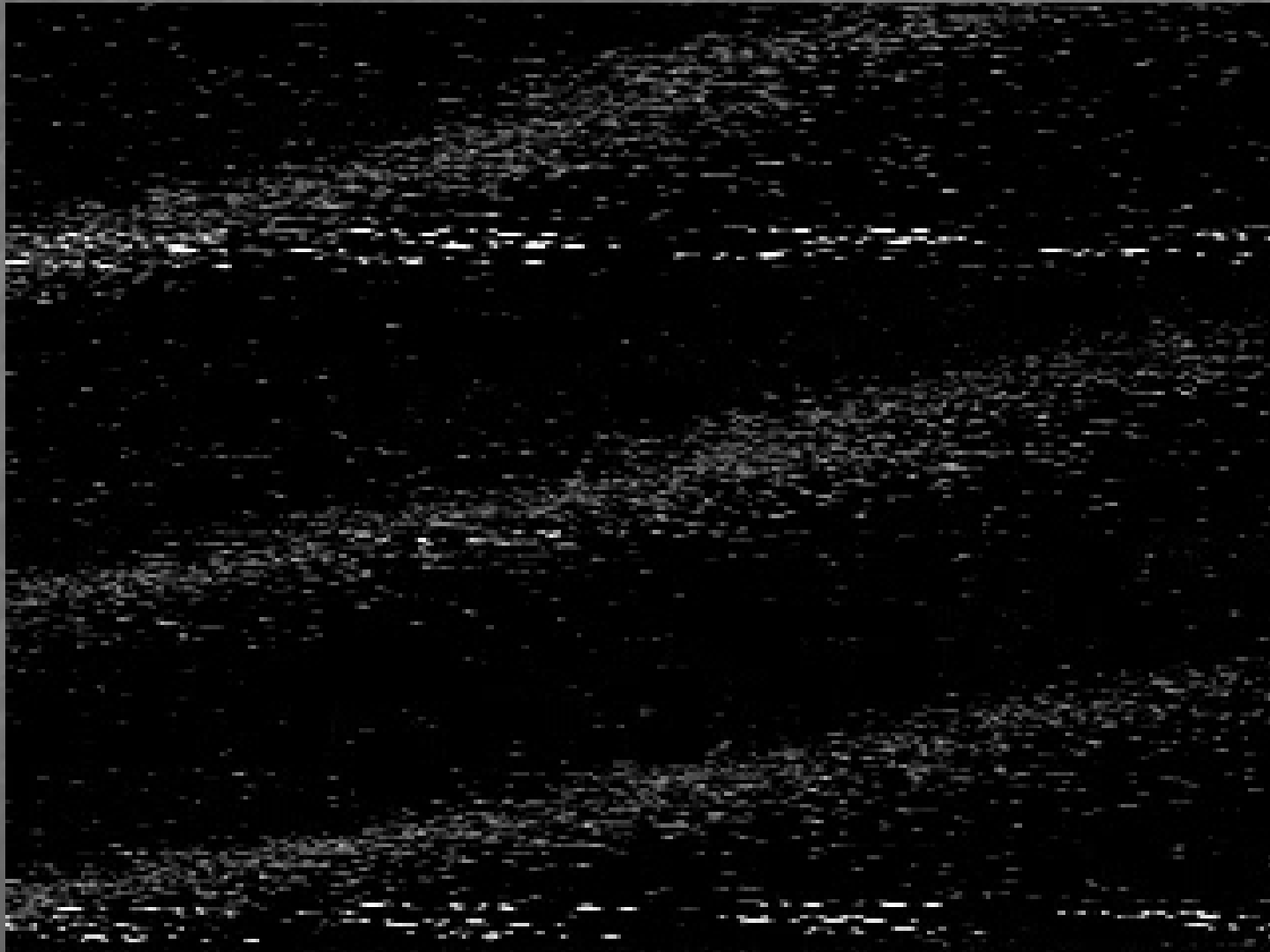


Presenter: Doug Wildermuth

Working Definition of "Drug"

Any substance, which when taken into the human body, can impair the ability of that person.

On something?



Incidence and Characteristics of Drug Use in America (2012)

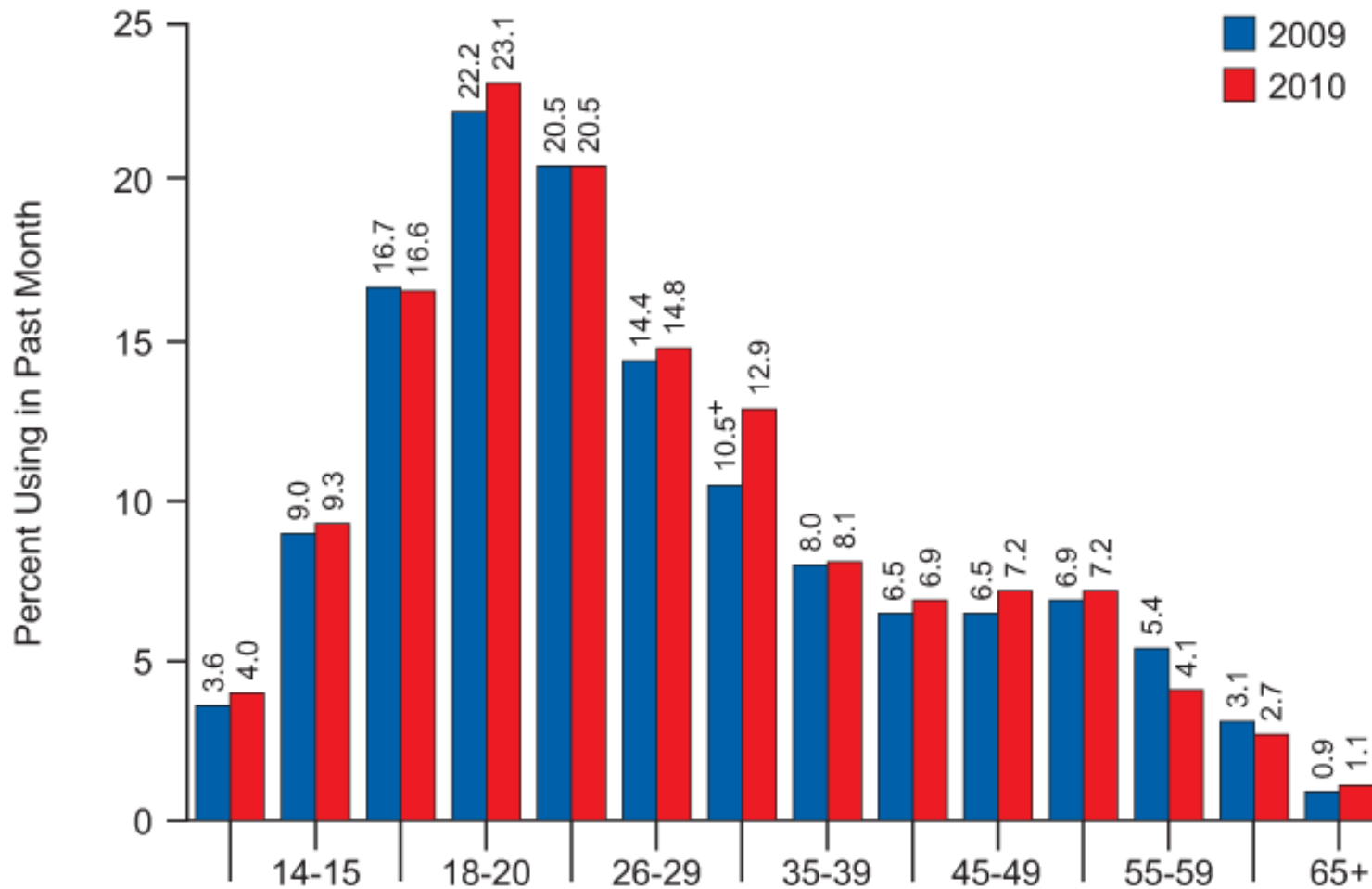
23.9 million Americans aged 12 or older were current illicit drug users and Marijuana is the most commonly used drug (was 21.6 million)

6.8 million people used prescription type drugs non-medically (was 7.0 million)

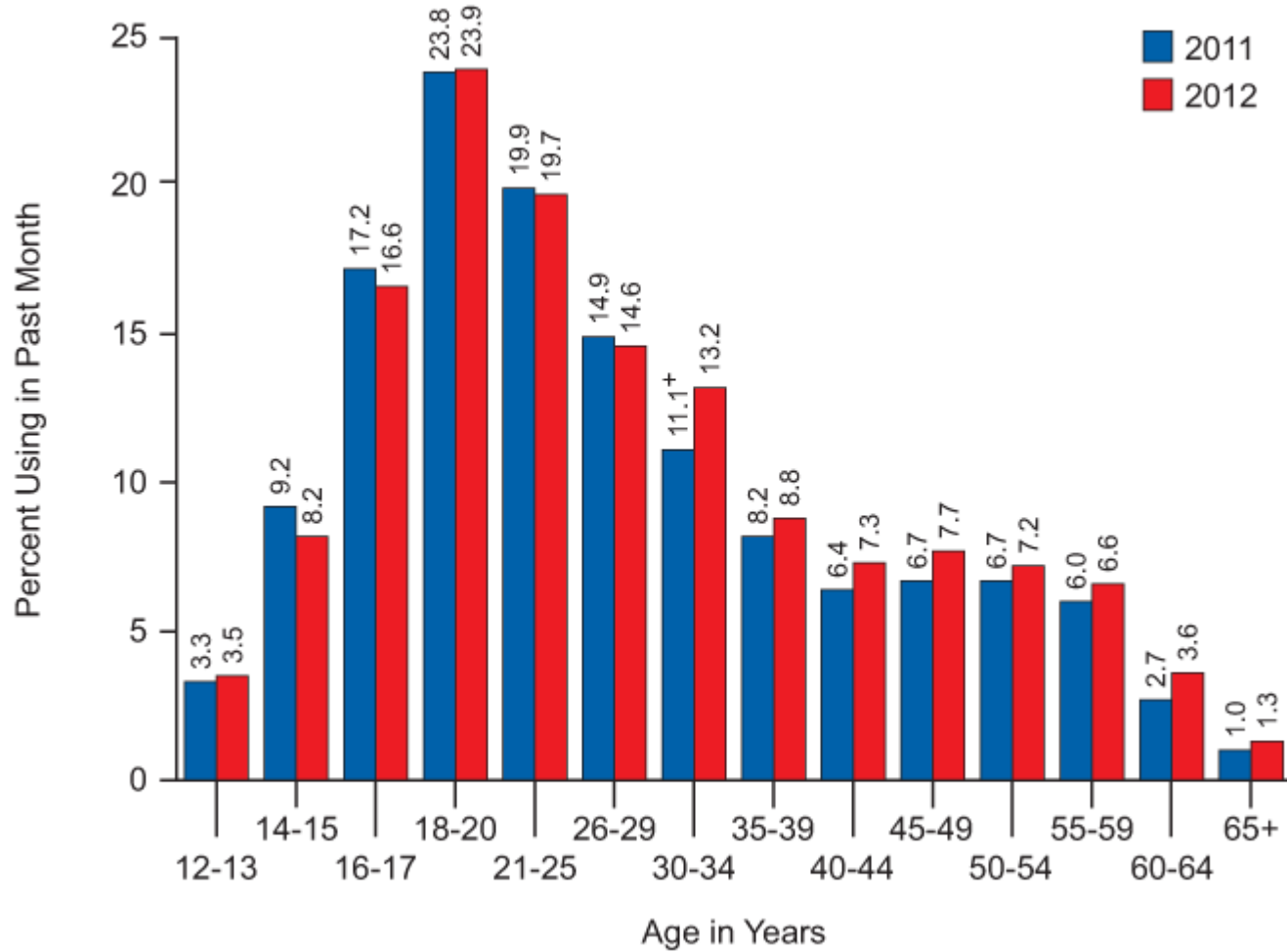
About 10.3 million illicit drug users admitted driving after using an illicit drug in 2012 (was 10.6 million)

**Source: 2012 National Survey on Drug Use and Health
(NSDUH)**

Predominant Ages



Predominant Ages



The Seven Drug Categories

Central Nervous System Depressants ★

Central Nervous System Stimulants ★

Hallucinogens ★

Dissociative Anesthetics

Narcotic Analgesics ★

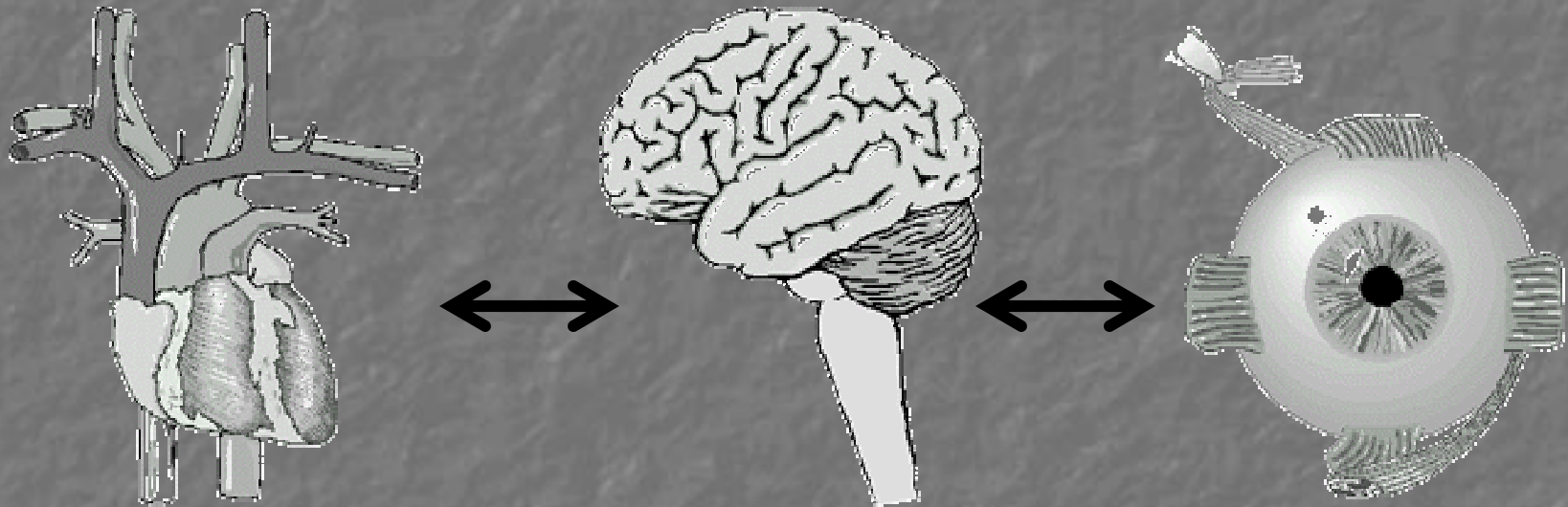
Inhalants

Cannabis ★

The New Stuff

? Drug Combinations ?

Interrelated Body Systems



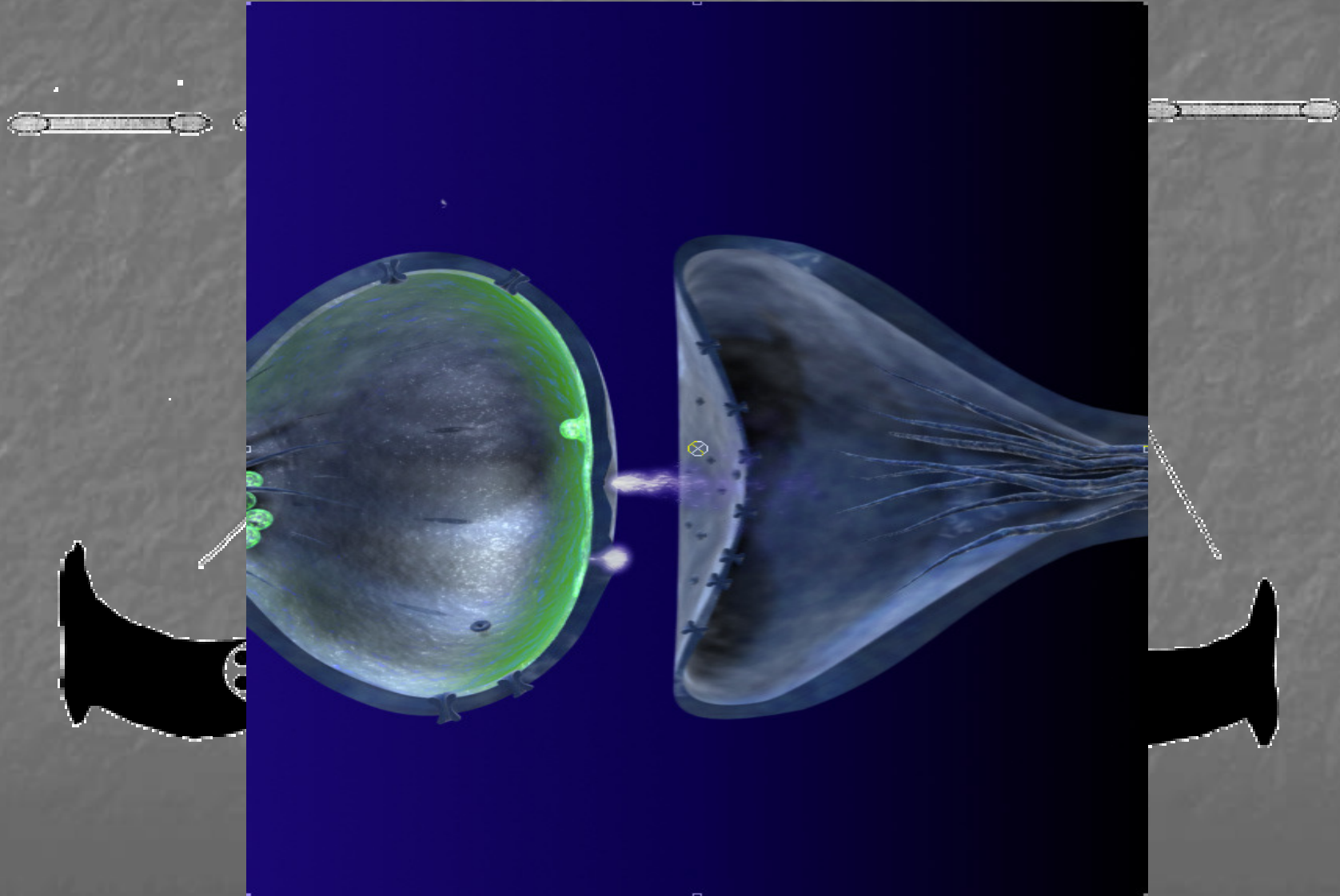
How a Neurotransmitter Works

Steps are numbered sequentially:

1. Neuron makes a neurotransmitter
2. Vesicles store neurotransmitter
3. Neurotransmitter enters gap to transmit electrical impulse to receptor site
4. Receptor performs a function

Acetylcholine Norepinephrine Dopamine
GABA (gamma aminobutyric acid)
Glutamate Serotonin Endorphin

A Simple Concept of a Nerve



Video of Synaptic Clefts



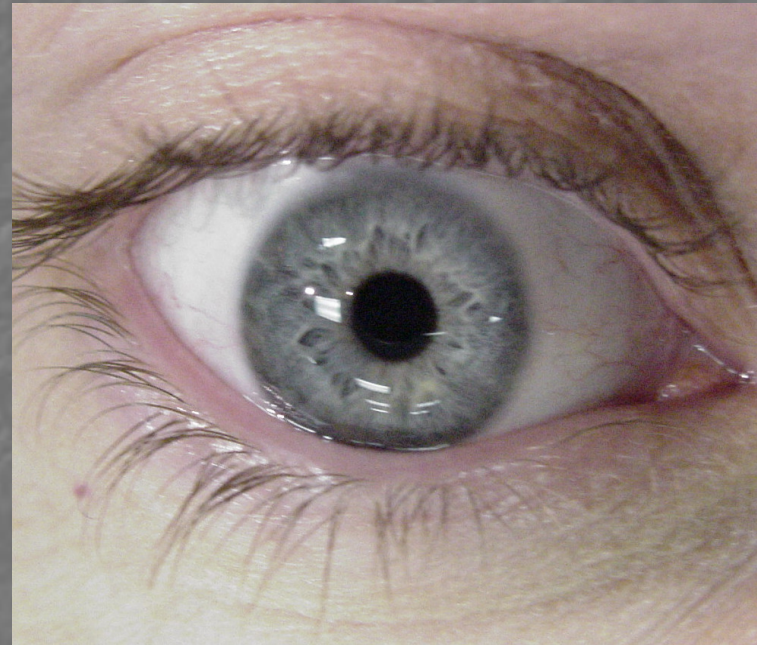
The Concept of Tolerance for a Drug

1. The same dose of the drug will produce diminishing effects.
2. A steadily larger dose is needed to produce the same effects.

Eye Indicators

Pupil size is very important.

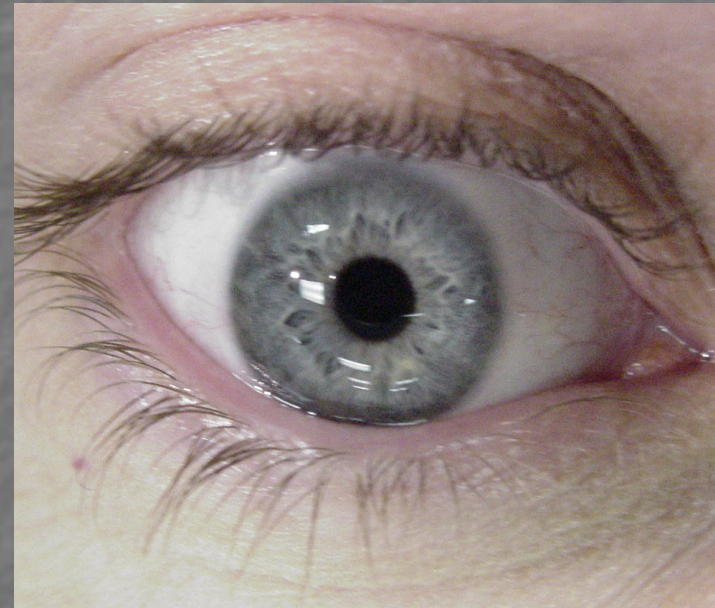
Pupillary reaction to light.



Eye Indicators

Horizontal Gaze
Nystagmus (HGN)
could be present.

Vertical nystagmus
could be present with
a high dose for that
individual.



Vital Signs Chart

HGN	Present or not?
Vertical Gaze Nystagmus	Present or not?
Pupil Size	Normal, Miosis, Mydriasis?
Reaction to Light	Slow or sluggish, Normal?
Pulse Rate	Down, Elevated, Normal?
Blood Pressure	Down, Elevated, Normal?
Temperature	Normal
Muscle Tone	Flaccid, Rigid

Common Signs of Drug Use

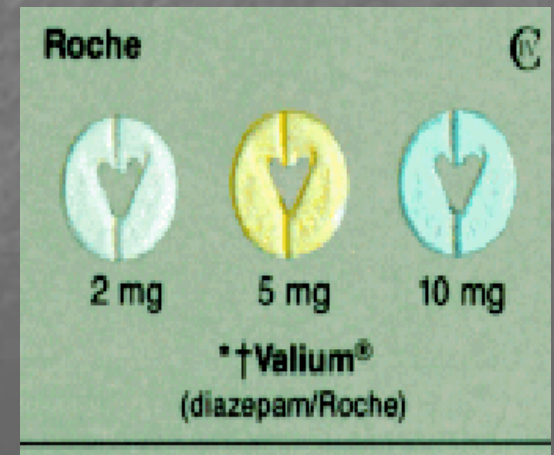
- Verbal and/or physical abuse
- Moody
- Secretive behavior
- Withdrawal from family & friends
- Lack of sleep, personal hygiene and appetite
- Too hyperactive or too little energy
- Weight loss or gain
- Loss of interest in work or simple tasks

Masking Medical Conditions

- **Diabetes**
- **Conjunctivitis**
- **Multiple Sclerosis**
& similar conditions
- **Shock**
- **Head Trauma**
- **Stroke**

QUESTIONS?

Central Nervous System Depressants





***Alcohol is the MOST
ABUSED DRUG in the
United States***

Alcohol is a CNS Depressant

DITEP – Drug Impairment Training for Educational Professionals

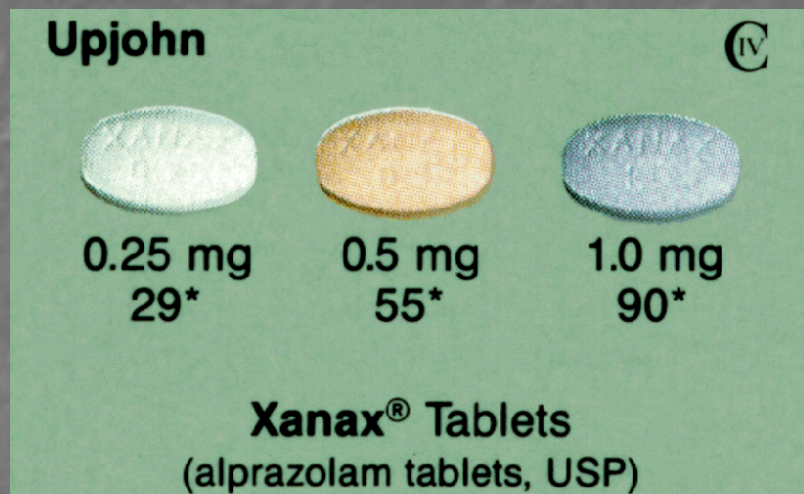
What We Do For Alcohol?



Major Types of Non-alcohol CNS Depressants

- **Barbiturates**
- **Non-Barbiturates**
- **Anti-Anxiety
Tranquilizers**
- **Anti-Depressants**
- **Anti-Psychotic
Tranquilizers**
- **Combinations**

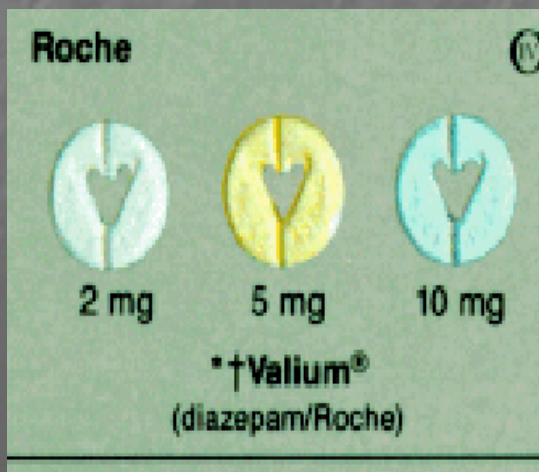
Xanax Tablets



Phenobarbital



Valium Tablets



Gamma-Hydroxy Butyrate (GHB)



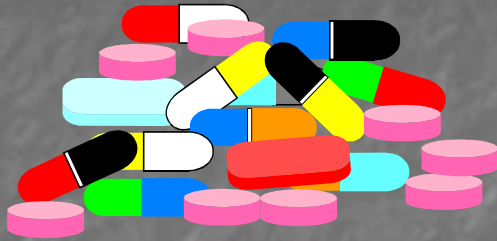
Rohypnol



Prozac



Methods Of Ingestion



Oral - principle
method of ingestion



Injection



Possible Effects of CNS Depressants:

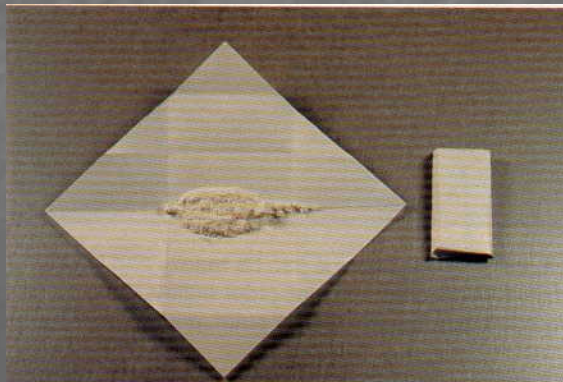
- **Reduced inhibitions**
- **Divided attention impairment**
- **Slowed reflexes**
- **Impaired judgment and concentration**
- **Impaired vision**
- **Lack of coordination**
- **Slurred mumbled or incoherent speech**
- **Emotional instability**

Central Nervous System Stimulants



Subcategories of CNS Stimulants

Cocaine



Packaged Rocks of Crack Cocaine



Coca Plant



“Erythroxyton Coca”

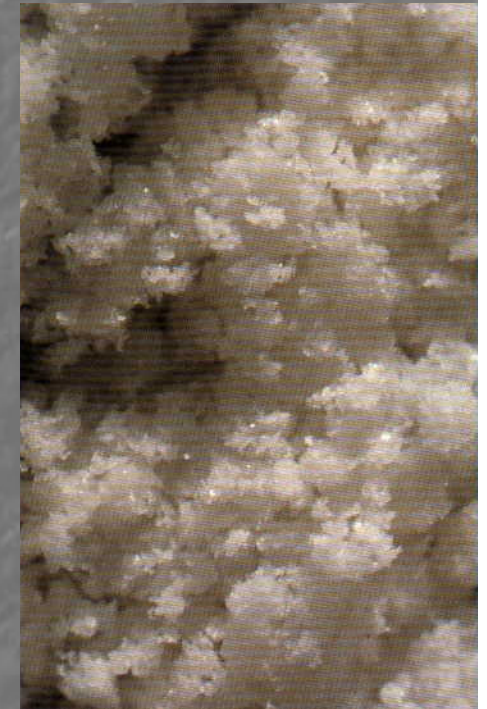
Coca Leaves



Subcategories of CNS Stimulants (continued)

The Amphetamines

- **Methamphetamine**
- **Amphetamine Sulfate**
- **Desoxyn**



ERROR: stackunderflow
OFFENDING COMMAND: ~

STACK: