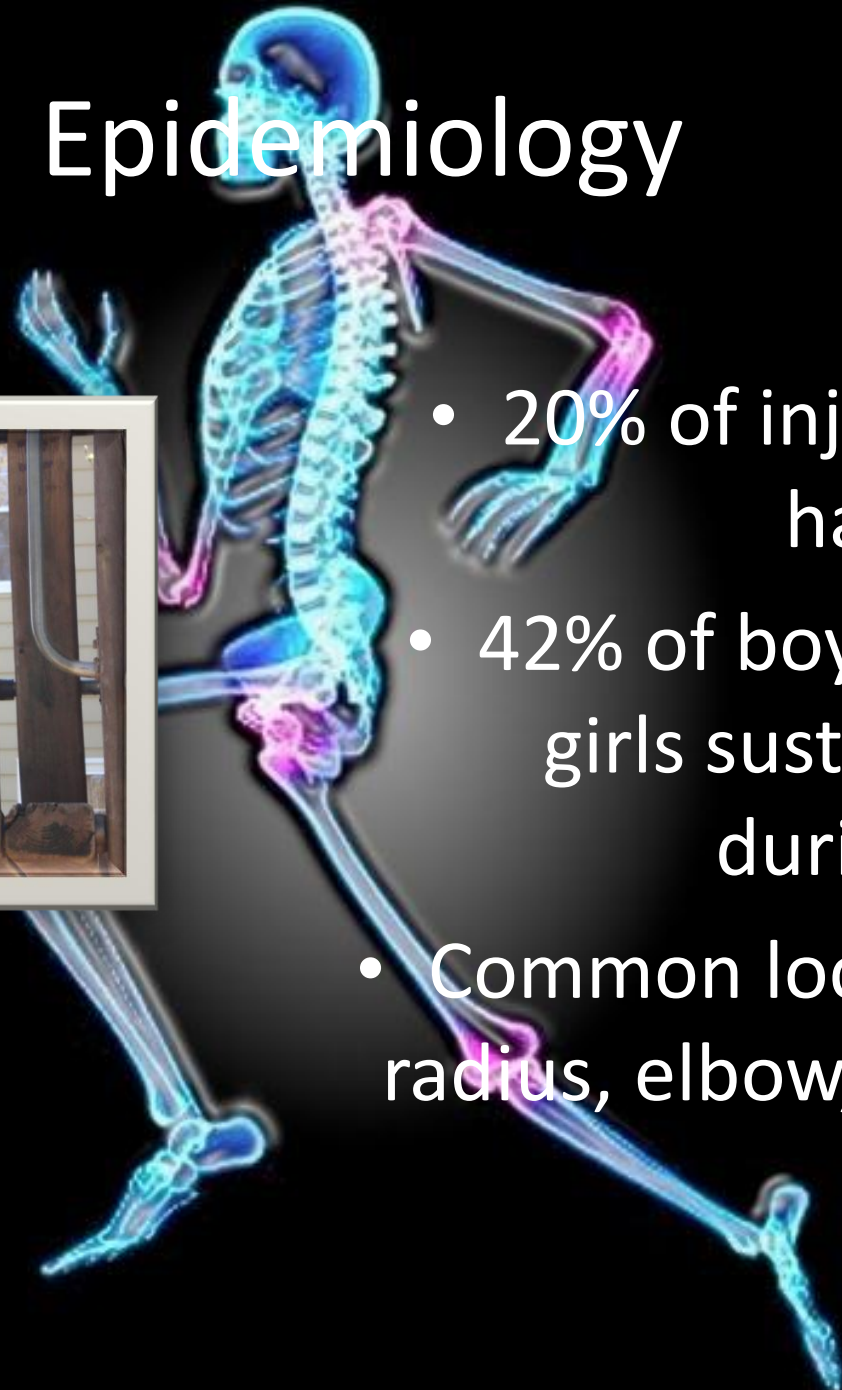




Sticks and Stones **may** break my bones

Richard Beebe MS RN NRP

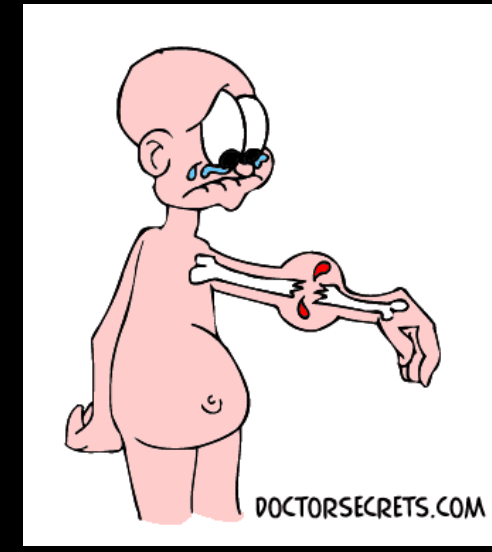
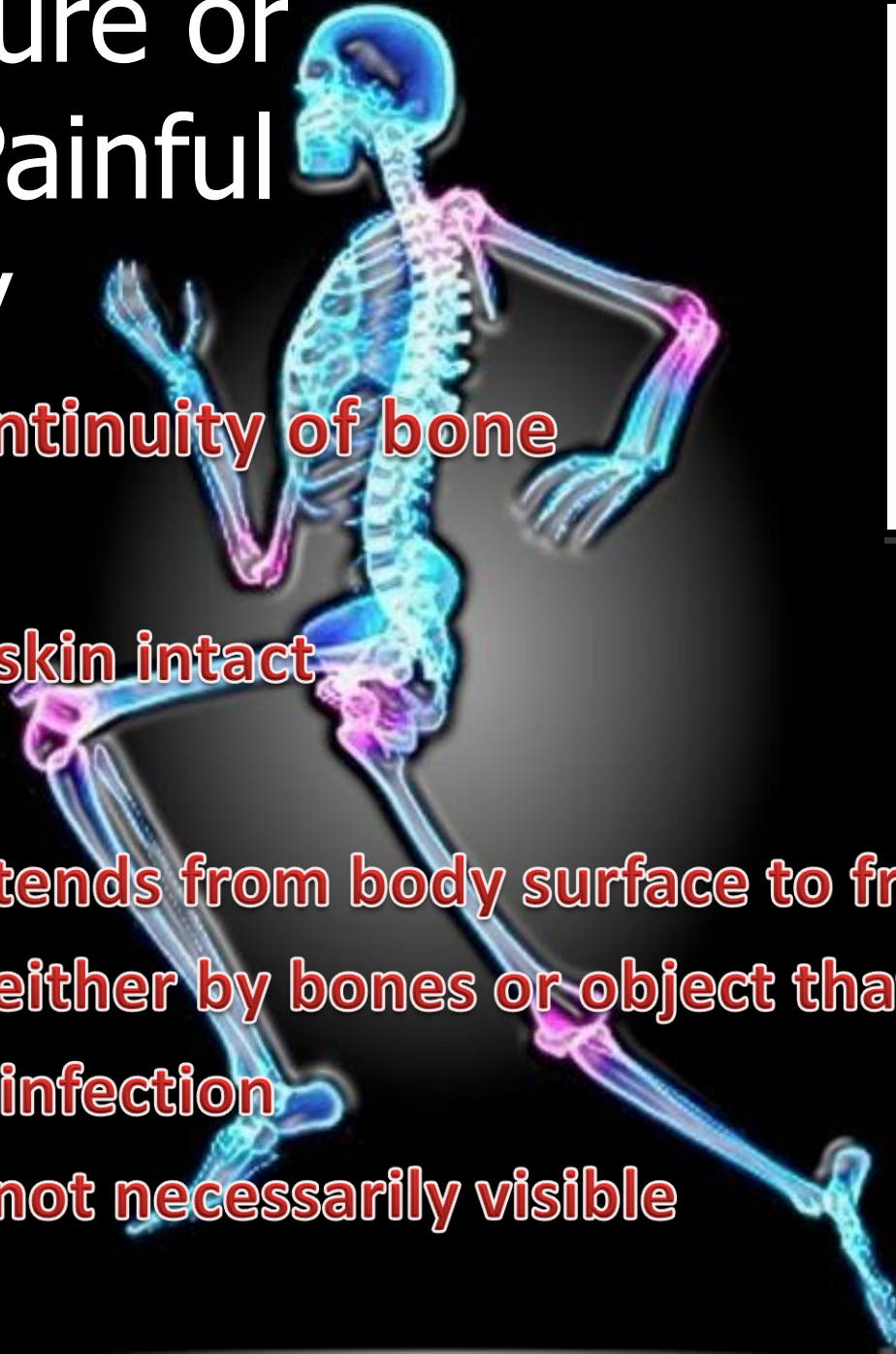
Epidemiology



- 20% of injured children have a fracture
- 42% of boys and 27% of girls sustain a fracture during childhood
- Common locations: distal radius, elbow, clavicle, and tibial shaft.

Fracture or Swollen Painful Deformity

- **Break in continuity of bone**
- **Closed**
 - **Overlying skin intact**
- **Open**
 - **Wound extends from body surface to fracture site**
 - **Produced either by bones or object that caused Fx**
 - **Danger of infection**
 - **Bone end not necessarily visible**





- Thicker periosteum
- Bone is more elastic
- Allows for unique fracture types
 - Torus (buckle)
 - Greenstick
 - Bowing
- Avulsion before tendon rupture

The *Developing* Bone

Green
Stick
Fracture









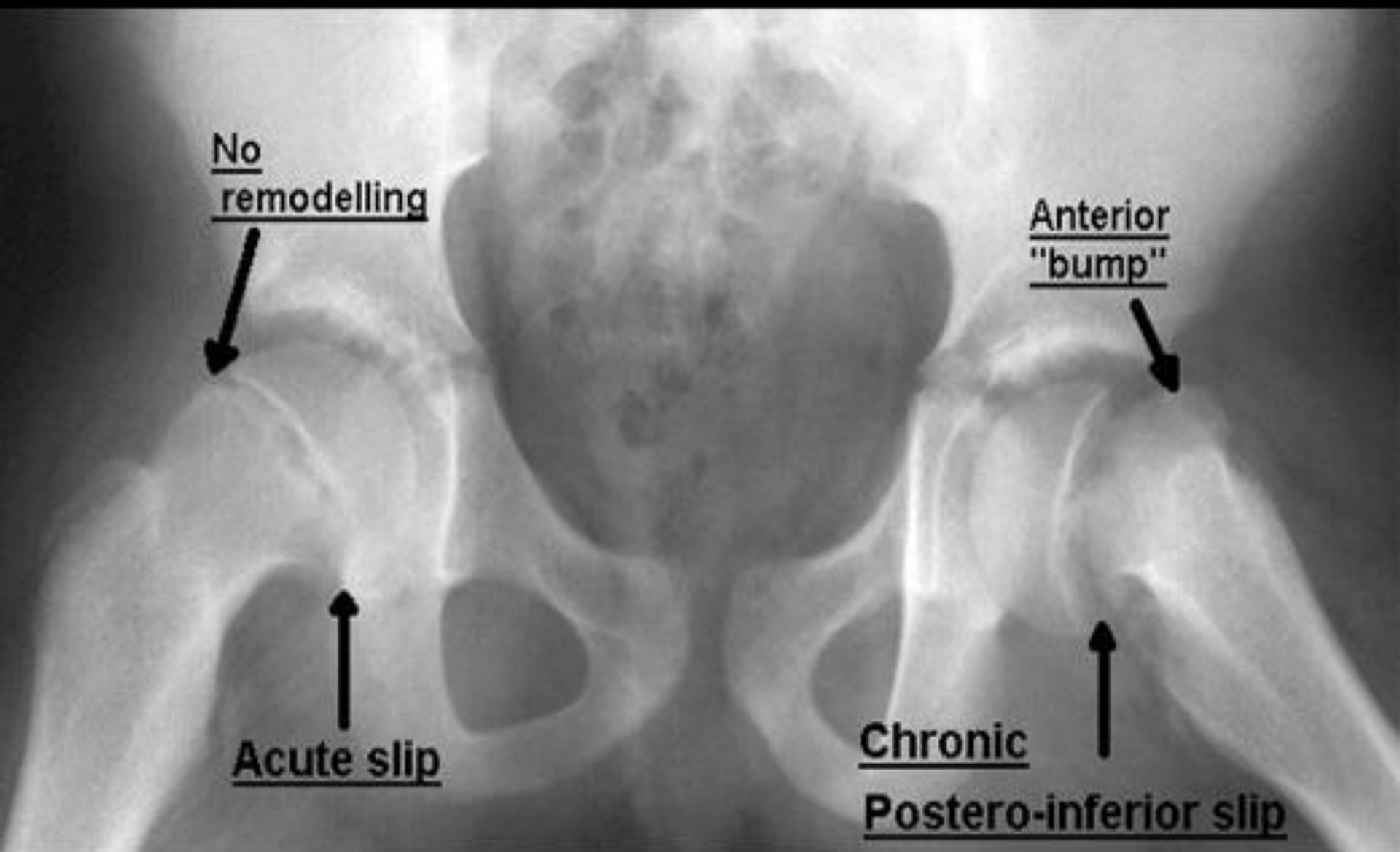
Buckle
Fracture





↳ Toddlers
Fracture

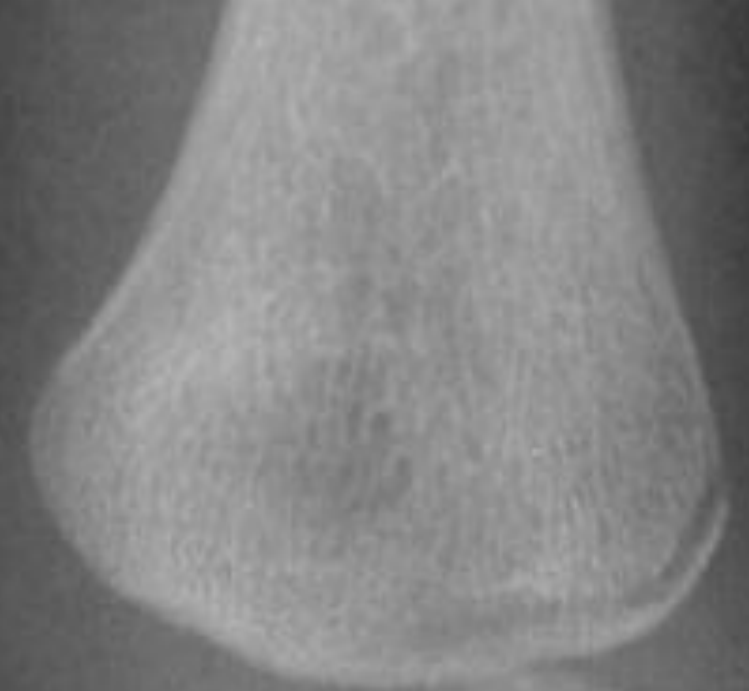
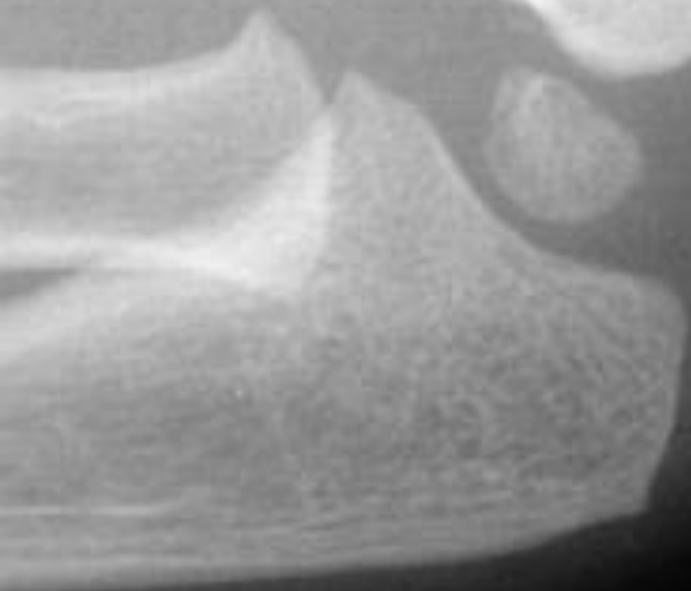




R
A
K

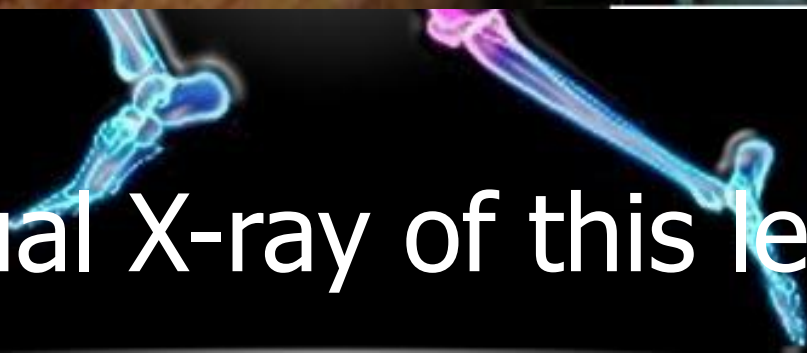


Salter – Harris I

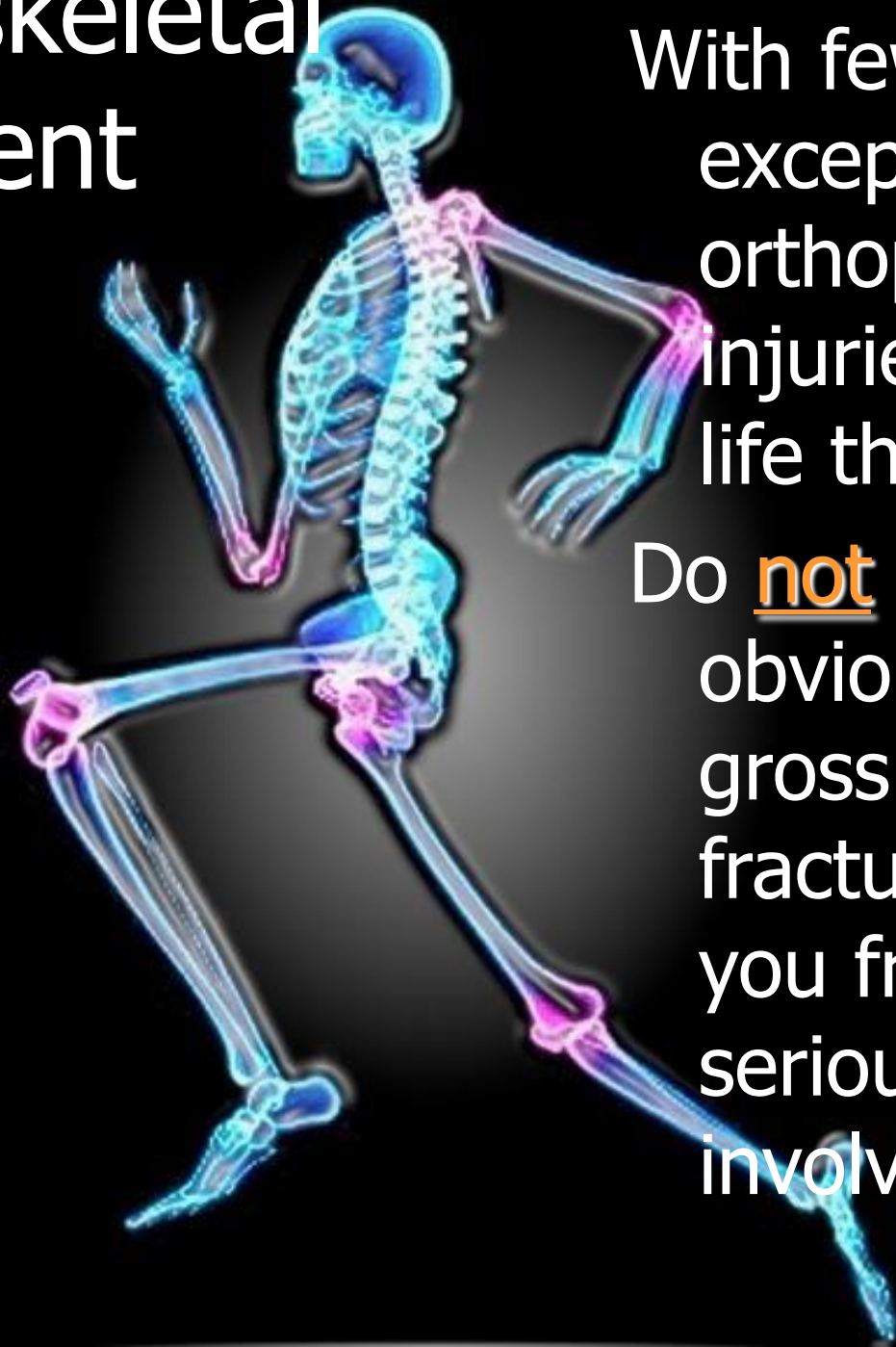




Actual X-ray of this leg



Musculoskeletal Assessment



With few exceptions orthopedic injuries are not life threatening.

Do not let drama of obvious or grossly deformed fracture distract you from more serious problems involving ABC's

Just the Facts!



- **F**unction: Distal
- **A**rterial Pulses
- **C**apillary Refill
- **T**emperature
- **S**ensation

- Rest
- Ice
- Compression
- Elevation



Questions??

McEvoy
Arrives
at Pulse
Check

