

How do you say “NO”



Peter I. Dworsky, MPH, NREMT-P

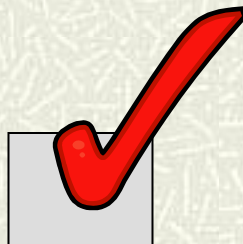
**MONOC Mobile Health Services
Corporate Director**



Disclaimers

- Financial: None – unfortunately
- Opinions: Strictly those of the presenters (although based on research) and not of any single agency I have worked for or hopes to work for.

- Check here to accept





Why do we say yes?

- # Legal requirements
- # Mandates
- # Contracts
- # Ethics
- # Misguided beliefs - have to go but don't have to come back
- # Take risks others would not





Decisions

- # Not every situation is the same
- # Current beliefs may demand you take conflicting actions.
- # Planning, documentation, and frank discussion supports your ability to make good decisions in these cases





Why say no?

- ❑ To protect staff
- ❑ Protect assets
- ❑ Save more people later
- ❑ It's not our job
- ❑ It's too dangerous





Who says no?

- # Staff
 - # Line Officer
 - # Command Officer
 - # Jurisdictional Authority
 - Police
 - Fire
 - Gov't
-



The Feds say no

- # Section 5(a)(1) of the OSH Act, often referred to as the General Duty Clause, requires employers to "furnish to each of his employees employment and a place of employment which are free from recognized hazards that are causing or are likely to cause death or serious physical harm to his employees".





How do we decide to say no?

Conduct a Risk Assessment

- # How dangerous is it?
- # What will happen if we go?
- # What happens if we don't go?





Date _____

Run # _____ Time _____

Crew members _____

Pickup location _____

Destination _____



Have objective criteria

1. VEHICLE OPERATOR EXPERIENCE WITH MCMT

Less than 1 year or casual	+5
1 - 2 years full time or part time	+2
2 - 5 years full time or part time	+1
> 5 years full time or part time	+0
Total	<input type="checkbox"/>

2. ROAD CONDITIONS

Difficult/ice covered/impossible/no travel advised	+15
Fair/slippy stretches/snow covered	+10
Normal/good	+0
Total	<input type="checkbox"/>

3. SEVERE WEATHER (All Seasons)

Warnings	+10
Watches	+5
Advisories	+5
None	+0
Total	<input type="checkbox"/>

4. ROAD TYPE

2 lane	+4
Mix of 2 lane and 4 lane	+3
4 lane	+0
Total	<input type="checkbox"/>

5. VISIBILITY

DAY	
Impaired	+5
Not impaired	+0
NIGHT (any portion of transport during hours of darkness)	
Impaired	+5
Not impaired	+3
Total	<input type="checkbox"/>

6. DISTANCE

> 500 miles	+3
> 250 & < 500 miles	+2
> 100 & < 250 miles	+1
< 100 miles	+0
Total	<input type="checkbox"/>

7. CREW FATIGUE (vehicle operator)

Trip extending beyond 24 hour shift &/or 2 or more trips this shift	+4
Trip extending beyond 16 hour shift &/or < 2 other trips this shift	+3
Trip extending beyond 12 hour shift &/or < 2 other trips this shift	+2
Trip extending beyond 8 hour shift &/or < 2 other trips this shift	+1
Well-rested, 1st 8 hours of shift	+0
Crew #1	_____
Crew #2	_____
Total	<input type="checkbox"/>

8. REST IN 8 HOURS PRIOR TO START OF SHIFT

< 6 hours	+2
> 6 hours	+1
8 hours	+0
Gold Cross Crew #1	_____
Gold Cross Crew #2	_____
Mayo One Crew #1	_____
Mayo One Crew #2	_____
Specialty Team Crew #1	_____
Specialty Team Crew #2	_____
Total	<input type="checkbox"/>

TOTAL

APPROVAL LEVEL

CREW DECISION 0-30

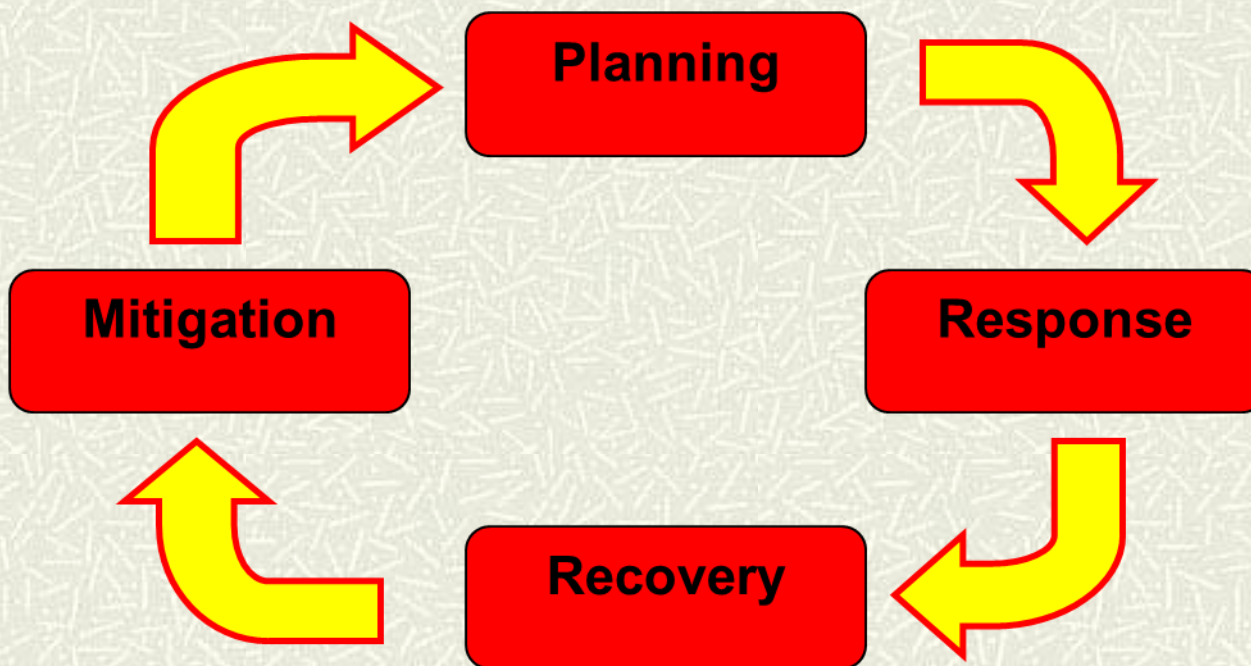
**REVIEW WITH SUPERVISOR
PRIOR TO TRANSPORT** 30+



When do we decide to say no?



When do we decide to say no?





The Star-Ledger

\$1.00 | MONDAY, OCTOBER 26, 2013

FINAL EDITION

NJ.COM

SAN FRANCISCO SWEEPS DETROIT. IN SPORTS

HURRICANE SANDY

- Already flooded, many shore towns scramble to evacuate. Page 8
- Where the storm will make landfall and what's closed today. Page 5
- Live help at nj.com. Our reporters answer your questions around the clock.

State forecast: A catastrophe



A satellite image shows Hurricane Sandy bearing down on the East Coast, especially New Jersey. The combination hurricane now/nexter is expected to bring record storm surges.



Preparing for the no go decision

- # Policies
 - # Staff education
 - # Notifications
 - # Evacuations
 - # Sheltering in place
 - # Reverse 911 messages
-

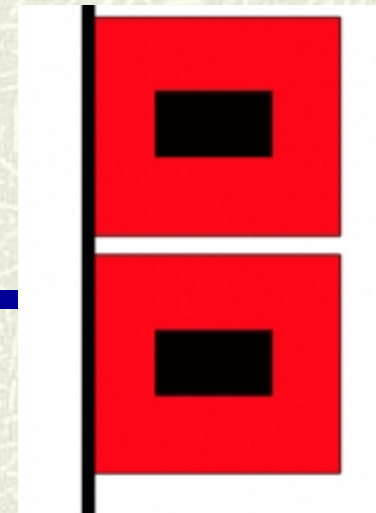


Tools & Resources for go / no-go

- # Policies
 - # NWS
 - # Traffic Cams
 - # MCCs
 - # Hippocrates
 - # Legal directives
 - # Historical knowledge
-



Model Baseline Policy



During hurricanes and tropical storms, the department will maintain a safe work environment for its EMS personnel and will provide essential emergency services to the public as long as the safety of the responders is not endangered by the storm conditions.



Tropical Storm / Hurricane Management Plan for EMS

SUSPENDING EMS OPERATIONS (RESPONSE) DURING INCREASED WINDS

EMS operations may be temporarily suspended during periods of increased winds. Ambulance operations should cease when sustained winds are 50 MPH and/or frequent wind gusts of 70 MPH. Other large vehicles (such as TSU, SOV, buses) should cease operations when sustained winds are 40 MPH and/or frequent wind gusts to 60 MPH. Other hazards must be considered including debris on the highway, flooded highways, debris in the air, difficulties of working outdoors in severe winds, and the impacts of the driver's reactions while operating an ambulance in high winds. These decisions will be made at the discretion of the State EMS Coordinator and/or County OEM EMS Coordinator within their jurisdictions.



This paragraph caused hours of discussion



Weather Service Feed

http://radar.weather.gov/radar.php?rid=dix&product=1 NWS radar image from Mt. ...

Convert Select

weather.gov

National Weather Service Enhanced Radar Image Mt. Holly, NJ Radar

Go to: Standard Version Local weather forecast by "City, St" City, St: Go Radar Status Message

Adjacent Radars:

Short Range Images
Reflectivity: Composite Loop Base Loop
Velocity: Storm Relative Loop Base Loop
Rainfall: 1-Hour Total Loop Storm Total Loop
MouseOver Off

Long Range Images
Reflectivity: Base Loop
U.S. Views
Reflectivity: National Loop Alaska Loop Hawaii Loop Guam Loop Puerto Rico Loop Radars by State

Additional Info:
Radar FAQ
Downloading Images
Mobile Users
GIS Users **KML**
Doppler University
Color Blindness Tool
Credits

Base Reflectivity

NWS Mt. Holly, NJ

National Weather Service WSR-88D Image from DIX 11/11/2013 15:55 UTC (10:55 AM EST)

Warnings: Tornado Severe Thunderstorm Flash Flood Special Marine



Ground conditions

Browser address bar: <http://www.511nj.org/cameras.aspx?default=NJ Turnpike 1> | 511nj.org :: Traffic Cameras

Navigation: Home | About | Traffic | Cameras | Mega Projects | Travel Links | FAQs | 511NJ Partners | RSS | My 511NJ Services

511 Get connected and go!

Camera List

NJ Turnpike Tour

- MM 001.2 North of Delaware Memorial Bridge (Carneys Point Twp)
- MM 002.1 South of Interchange 1 - Delaware Memorial Bridge (Carneys Point Twp)
- MM 002.4 Interchange 1 - Delaware Memorial Bridge (Carneys Point Twp)
- MM 013.0 Interchange 2 - US 322 (Woolwich Twp)
- MM 013.3 North of Interchange 2 - US 322 (Woolwich Twp)
- MM 026.1 Interchange 3 - NJ 168 (Runnemede)
- MM 034.4 South of Interchange 4 - NJ 73 (Mount Laurel Twp)
- MM 034.4 Interchange 4 - NJ 73 (Mount Laurel Twp)
- MM 037.0 North of Interchange 4 - NJ 73

Selected highway

Map labels: Hurst Naval Air Station, Church Rd, Silver Bay, Toms River, Bay Ave, Interchange 4, Interchange 3, Interchange 2, US 322, NJ 168, NJ 73, NJ 37, NJ 35, NJ 539, NJ 70, NJ 9, NJ 166.

NJ 37 at NJ 35
Camera located Median
Video Provided by NJDOT

POWERED BY TrafficLand

Copyright © NJDOT, TRANSCOM, ICx, NAVTEQ, m12x



Medical Coordination Center

- # Extension of NJDHSS
- # Supports the integrity of the healthcare system during Large Scale Incidents
- # Notification point and situational awareness portals
- # Collect and collate regional health information, monitor system performance and capacity
- # Support logistical requests in coordination with state and local agencies





Hippocrates

- # A data collection, integration, display, analysis and information system
- # Web-based application owned by NJDHSS
- # Software backbone for NJ's centric health emergency preparedness and response network
- # Component of all-hazards knowledge management system shared by public, private and homeland security stake holders

The screenshot shows the Hippocrates web application interface. At the top, there is a navigation bar with tabs for "Operations", "METIS", "Interactive Map", "Healthcare Facility Data", "Hospital Divert", "Data Collection & Analysis", and "Communications". Below this is a sub-menu with "Medical Facility Information", "Medical Facility Capabilities", and "Medical Facility Reports". The main content area is divided into two panels. The left panel, titled "HEALTHCARE FACILITIES", has filters for "STATE" (NJ), "REGION" (ALL), and "COUNTY" (ALL). Below the filters is a list of facilities: Baysshore Community Hospital, CentraState Medical Center, Clara Maass Medical Center, Community Medical Center, Jersey Shore University Medical Center, and Kimball Medical Center. The right panel shows a map of New Jersey with a pop-up window titled "Divert Information" for Saint Peter's University Hospital. The pop-up window contains the following details: Facility: Saint Peter's University Hospital, Status: Divert-Specialty Services, Start Time: 09/09/2013 08:43:37, Expiry Time: 09/09/2013 12:43:37, and Reason: No Psychiatric Services. At the bottom of the interface, there is a status bar that reads "INCIDENT - FEDEX WHITE POWDER" and a "CHAT" button.



From: Atlantic County OEP <emlist@readyatlantic.org>


Subject: URGENT MESSAGE

Date: October 29, 2012 4:33:36 AM EDT

To: <buenavistaoem1@comcast.net>

IMPORTANT MESSAGE FROM THE ATLANTIC COUNTY OFFICE OF EMERGENCY MANAGEMENT

****URGENT MESSAGE****



Per order of Atlantic County Emergency Coordinator Vince Jones, (NJSA A:9-33) all first responders are to cease operations as of 10/29/2012 at 1600hrs. 1st Responders are to seek shelter and hunker down and wait out the landfall of Tropical Cyclone Sandy.

After first light you will need to make a determination if it is safe to begin search & rescue and damage assessment. Assess roadways and infrastructure to determine what needs to be done to access your community.

Atlantic County OEM is preparing plans to begin re-entry for Emergency Resources into every area of the county. Keep in contact with Atlantic County EOC so that we can support your operations.

This was a message from the Atlantic County Office of Emergency Management.

Documents on this site are UNCLASSIFIED//FOR OFFICIAL USE ONLY (U//FOUO).

They may contain information that may be exempt from public release under the Freedom of Information Act (5 U.S.C. 552). They are not to be released to the public, the media, or other personnel who do not have a valid need-to-know without prior approval of an authorized Atlantic County OEP official.

(609) 407-6700 EOC (Only manned during activation)

(609) 909-7200 24 Disp

(609) 407-6745 Fax

emer_mgmt@aclink.org



General Considerations

- # Local conditions OK, enroute its ok to turn around and come back
 - # Consider conditions created by wind, heavy rains, obstructed roads, flooded streets, poor visibility and flying debris
 - # Rely on personal experience – does your staff have it?
-



General Considerations

- # Immediate – tornado / thunderstorm / Hail
- # Ongoing – Hurricane (can spawn tornados)
/ winter storm
- # Flooding
 - Flash – cause of most weather related fatalities in US



Wind

Effect on people

- 11mph – onset of discomfort
 - 20mph – affects performance
 - 45mph – difficulty walking upright
 - 55mph – trees are uprooted
 - 65mph - Roofing shingles are torn off
 - an object of that size traveling through the air at speeds in excess of 130 ft per sec can do great harm
 - Gusts are typically 30-50% higher
-



Hazards

- # Once trees start falling, so do power lines
 - Can local power de-energize lines remotely?





Wind

Box ambulance

- @ 25mph, a crosswind of 55mph may cause deviation
- @ 55mph, a crosswind of 35mph may cause deviation

Suburban

- On a wet road a stationary SUV will begin to slide with an 80+ mph wind





Vehicles

Vehicles involved

- Course deviation
- Overtaking
- Collisions





Water

Just because the vehicle can operate in a hazardous environment, doesn't mean the crew can







Crisis standard of care

- # Slower responses
- # Reconfiguration of crews
- # Closest hospital
- # Limited inter-facility transfers
- # Limited long distance transfers





Adopt Crisis Standard of Care

- # Only dispatch units for life threats
 - # No response for well checks
 - # MVAs unless report of major injury
 - # Co-locate EMS with other agencies to ensure power and response resources (tow / plow / manpower)
 - # Enhanced 911 triage and call-backs
 - # Reduction of medical supplies
-



Drug Shortages

Operating without required equipment

Legal requirements v. ethical duty to patients

Using “expired” drugs

- The science behind such labels
- Extensions
- Contraindications





Wake up, we're almost done





Resumption of service

- # Have to convey message to response personnel, their safety is paramount
- # Hazards will exist for 72+ hours
 - Gas leaks
 - Traumatized animals
 - Haz mats
 - Fires
 - Civil unrest
 - Fatigue





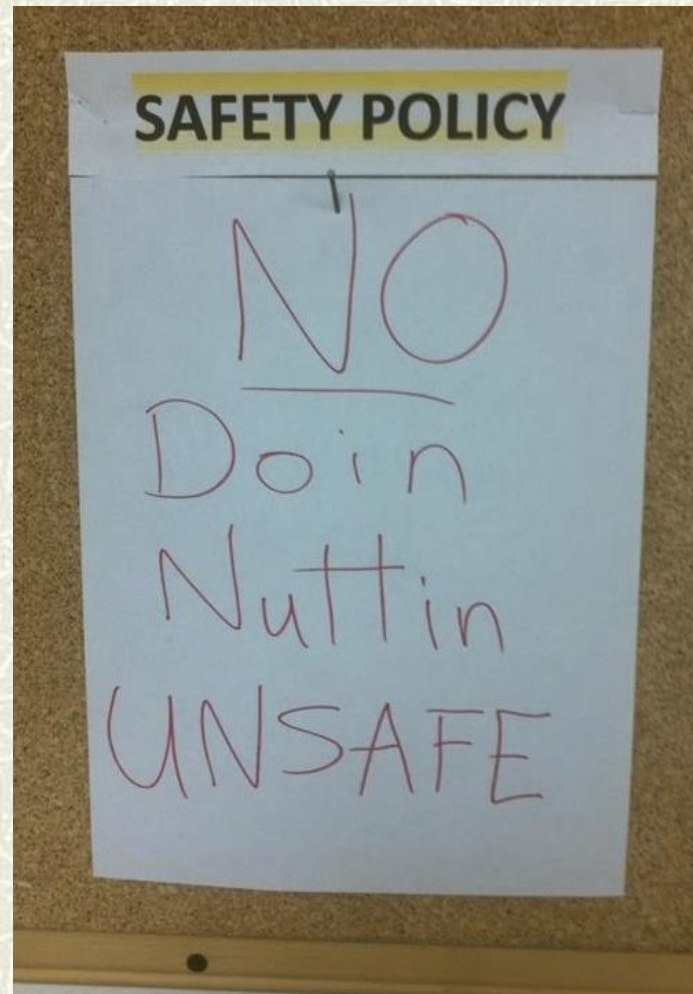
Proper PPE





Safety Messages

- # Seat belts
- # Cell phones
- # Hi Vis clothing
- # Infection control





Water Safety message

- Before walking through water, members must use a pike pole or stick to ensure the ground has not washed away or collapsed.
 - Use extreme caution when walking through water. Six inches of moving water can knock a person off their feet.
 - Be aware of hazards in the water such as downed live electrical wires and wildlife, including snakes
 - Use extreme caution and limit speed when driving. Be especially cautious where the ground is saturated or flooded—the road could be washed away.
-



Defense

- # Show total unreasonableness for response
- # State of Emergency
- # Will the politicians
Support your decision

Can't vs Won't

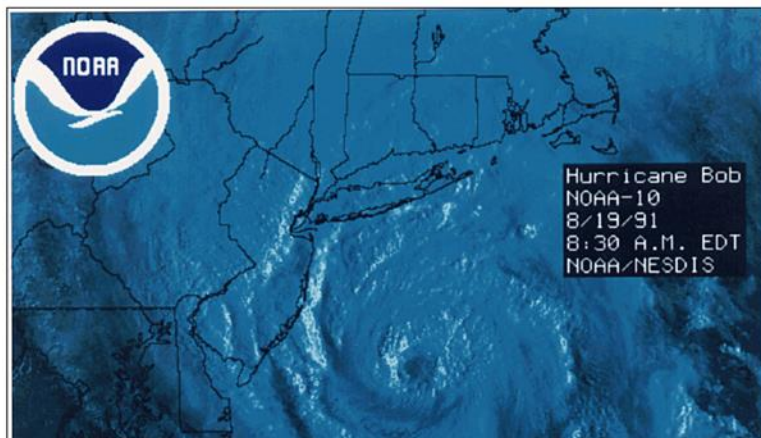




Defense

- # What was done prior
- # Within guidelines
- # Training
- # Special equipment
- # Policies

State of New Jersey
**Tropical Storm/Hurricane Management Plan for
Emergency Medical Services**





Misconceptions

- # “Duty to Act”
 - # “Patient Abandonment”
 - *“Abandonment is generally defined as the termination of the provider-patient relationship by the provider, without the consent of the patient.”*
 - # What happens if we never get there
-



Active shooter – Do we go in?

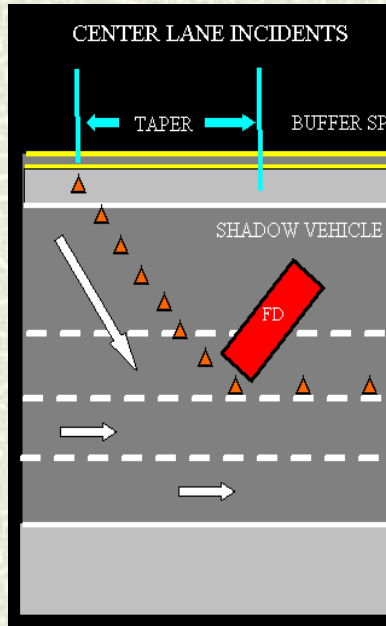




© ERNST PETERS | The Ledger

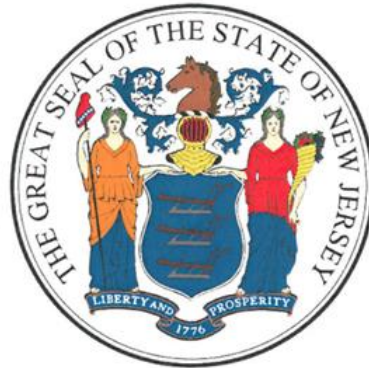


Unsa



State of New Jersey

Highway Incident Traffic Safety Guidelines for Emergency Responders



Endorsed by New Jersey Office of the Attorney General
Date: _____, 2010





When else should we say no?

Fire stand bys in the building

MVC no injuries

Swift water rescue

Haz Mat response

?

?



Have clear cut directions



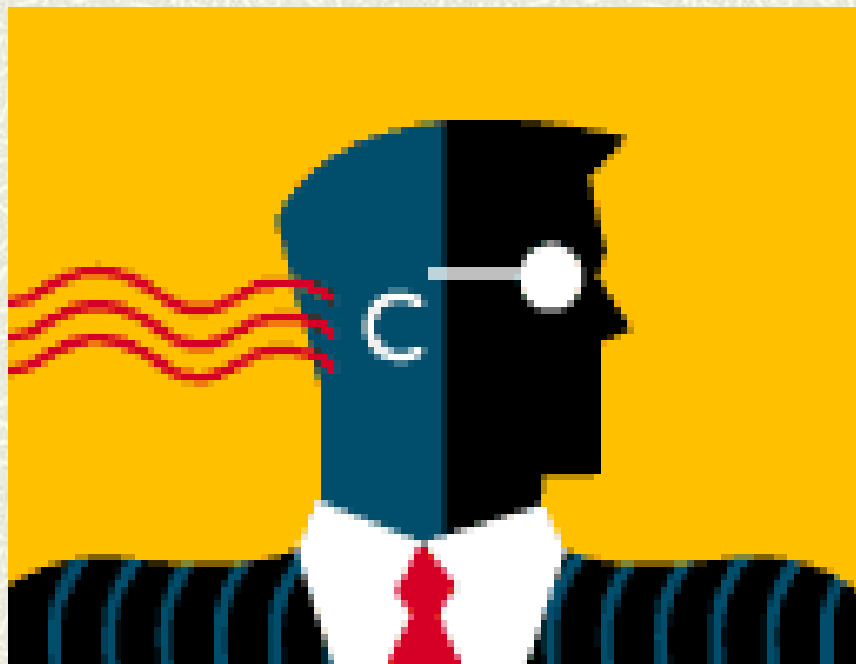


Questions for you

- # Do you have a written policy that identifies when you cease operations?
 - # If yes, does it specify wind speed or other criteria? What is it based on?
 - # Do you have a PIO to convey policy to general public & other agencies?
 - # Who makes the decision to cease operations?
-



Questions for me?



Peter I. Dworsky

Peter.Dworsky@MONOC.org
