



The EMS Response

The Barricaded Perpetrator

The Barricaded Emotionally Disturbed Person



Stuart Goldstein M.S.

Detective Investigator

NYPD TARU 28 Years

Retired on August 31, 2400 Hours

13 Days Ago

Valhalla Volunteer Ambulance Corp

Paramedic Student

I Have Been On Both Sides Of The Fence



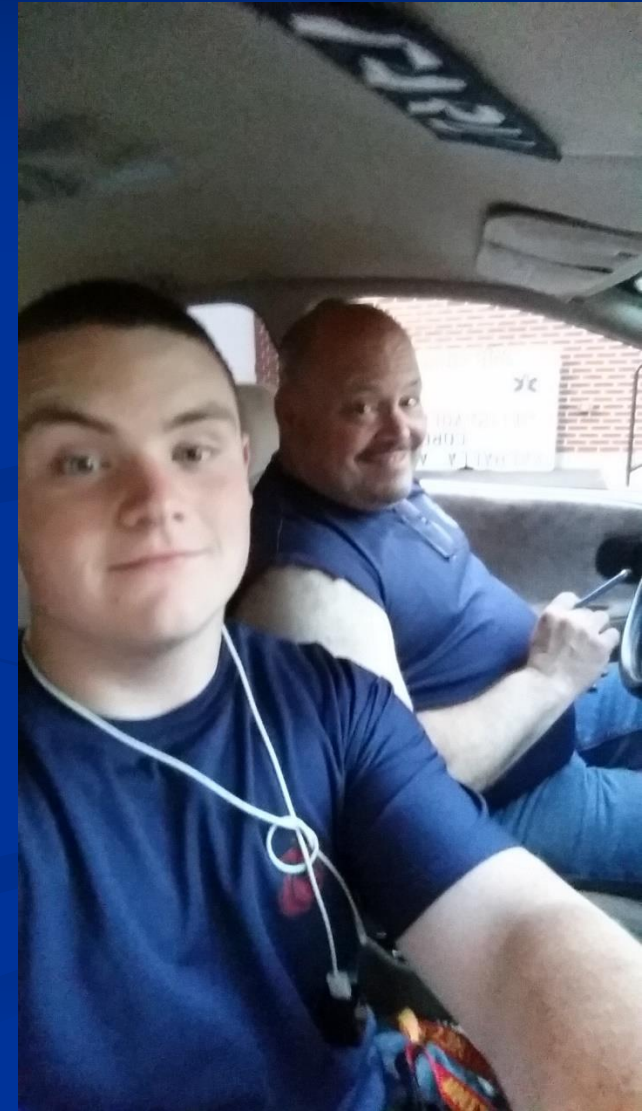
My Son Got Me Back To EMS



We Went To Parades



We Rode Together



Sometimes It Was Scary







My History

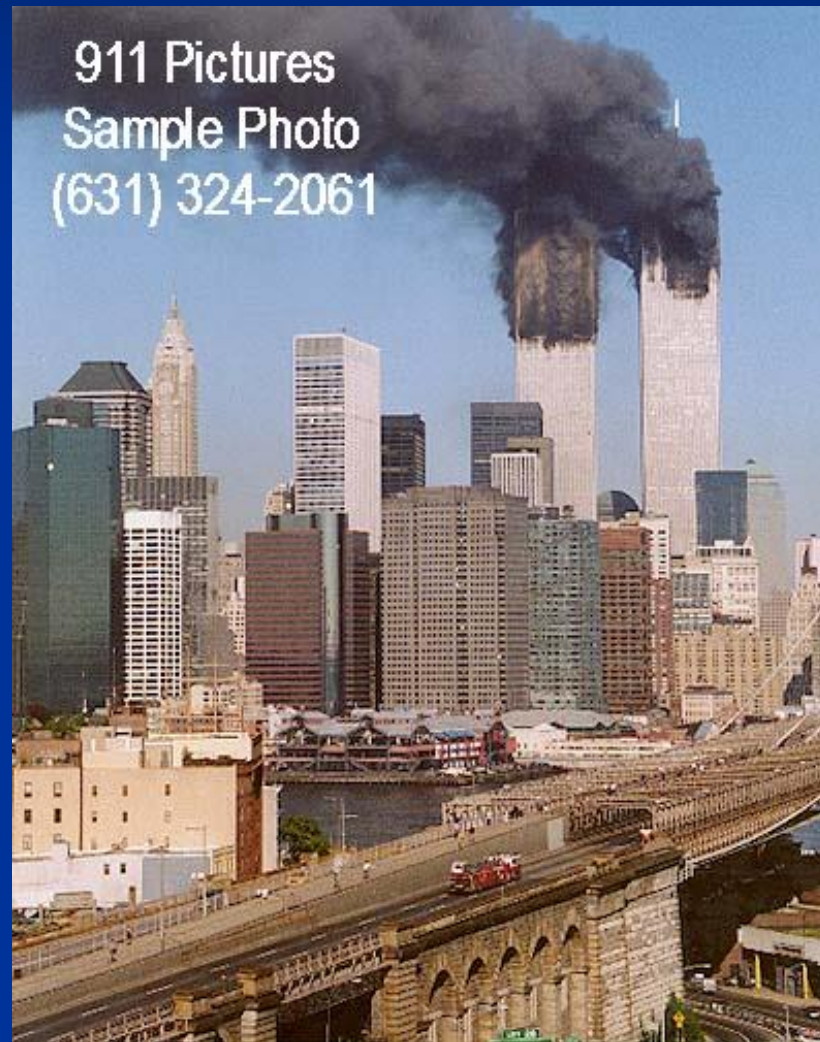


January 1987 – May 1990
NYPD 47 Precinct, GLA Car

May 1990 – February 1998
NYC –OEM, Communications Coordinator

February 1998 – August 31, 2014
NYPD TARU, Senior Hostage Negotiation Tech.
Communications Coordinator

I Survived September 11, 2001





You Are All Smart EMS Providers



My Presentation Today

Is Not To Teach

- You People In The Audience How to Treat Injured and Sick People at The Scene of Barricaded Perpetrators with or without Hostages.
- You People In The Audience How to Treat Injured and Sick People at The Scene of A Barricaded Emotionally Disturbed Person with or without Hostages.



I Want To Stop Rumors, I Did Not Hit Him. I Helped Him

EMS Response

Barricaded Perpetrators'

Hostage Takers

Emotionally Disturbed People



Yes, Lets Make The Jumper Move to the Middle of the bridge.



Do Hostage Barricaded Calls Take Place During certain Times of Day



Hostage Negotiation Jobs 2013

Day of Week

Day of Week	Number of Cases	Percent
Sunday	62	14
Monday	74	16
Tuesday	59	13
Wednesday	79	17
Thursday	68	15
Friday	61	13
Saturday	60	12
Total	463	100%

Hostage Negotiation Jobs 2013

Time of Day

Time Period	Number of Cases	Percent
0000 x 0800	113	25
0800 x 1600	173	37
1600 x 2400	177	38
Total	463	100%

When Is A Job A Hostage Job



UNLAWFUL IMPRISONMENT

SECOND DEGREE

(A Misdemeanor)

PENAL LAW 135.05

(Committed on or after Sept. 1, 1967)

Under our NYS law, a person is guilty of Unlawful Imprisonment when he or she restrains another person.

The term "restrain" used in this definition has its own special meaning in our law.

*A person restricts another's movements intentionally when his or her conscious objective or purpose is to restrict that person's movements.*²

A person restricts another's movements **unlawfully** when he or she is not authorized by law to do so.

General Care: Agitated Patient Restraint / Excited

Delirium

Criteria

- For agitated patients at risk of causing physical harm to emergency responders, the public and/or themselves

EMT

- Call for Law Enforcement ←
- ABC and vital signs as tolerated
- Airway management and appropriate oxygen therapy, if tolerated
- Check blood glucose level, if equipped and tolerated. If level is abnormal refer to Diabetic Protocol

EMT STOP

INTERMEDIATE

- Vascular access if possible and safe for provider

INTERMEDIATE STOP

CCT

PARAMEDIC

- Patient AGE less than 70: Midazolam (Versed) 2.5mg IV or 5 mg IM or IN may repeat once in 5 minutes

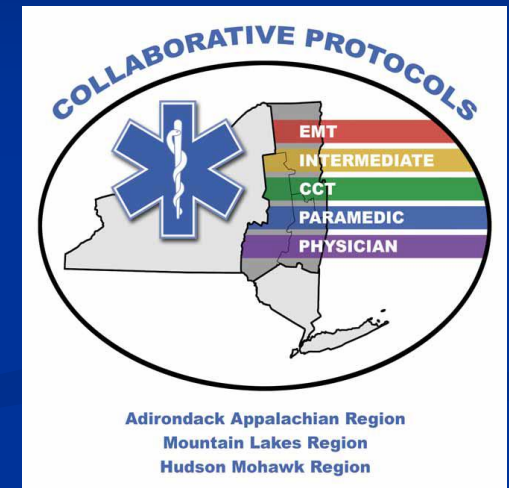
CCT and PARAMEDIC STOP

PHYSICIAN OPTIONS

- Additional Midazolam (Versed) IV, IM or IN

Key Points/Considerations

- **Patient must NOT be transported in a face-down position**
- If agitated patient goes into cardiac arrest, consider possibility of acidosis, and administer Sodium Bicarbonate as part of initial resuscitation
- Verbal de-escalation of situation should be attempted prior to chemical restraint
- **A team approach should be attempted at all times for the safety of the patient and the providers** ←
- If the patient is in police custody and/or has handcuffs on, a police officer should accompany the patient in the ambulance to the hospital
- EMS personnel may only apply “soft restraints” such as towels, cravats or commercially available soft medical restraints ←
- All uses of this protocol must have review by the Regional QI Coordinator and the Agency Medical Director



What Is A Hostage Barricade

A hostage situation begins the moment a suspect takes a person under his or her control and subjects that person to the risk of bodily harm *for the purpose of furthering a criminal act or to facilitate escape.*

There are two broad categories of hostage situations:

- a. The classic hostage situation, in which the hostage-taker is contained within a room, building, store, or other **physically segregated area**;
- b. The mobile hostage situation, in which the hostage-taker is on the street or another location where **he or she is not restricted by clear physical boundaries.**

Classic Vs. Mobile

Physical Boundary



No Physical Boundary



Outer Perimeter Vs. Inner Perimeter

OUTER PERIMETER - Area sufficiently removed from actual scene of incident to ensure the safety of all spectators, including members of the news media, EMS and incoming forces.

The establishment of outer perimeters dictates the evacuation of all civilians and unnecessary police personnel from this area. This is where EMS is.

Outer Perimeter



Inner Perimeter

ESU/HNT/TARU

Civilians/Police Officers/EMS



Quick Exit

Ballistic Vest & Helmet



Who Is Who At HNT Scene





TARU

EMS Arrives On Scene



www.bigstock.com · 32719085

?’s You Want To Ask the I/C

- How Many People Involved, this includes the bad guys and hostages and Cops

WHY

EMS

- Is the bad guy confined or mobile

WHY

- What is the staging location for EMS

WHY



www.bigstock.com · 32719085

Staging – Don't Get Locked In



World Trade
Center 1993



1993

Staging Your Ambulance

Can You Get Out?



September 11, WTC



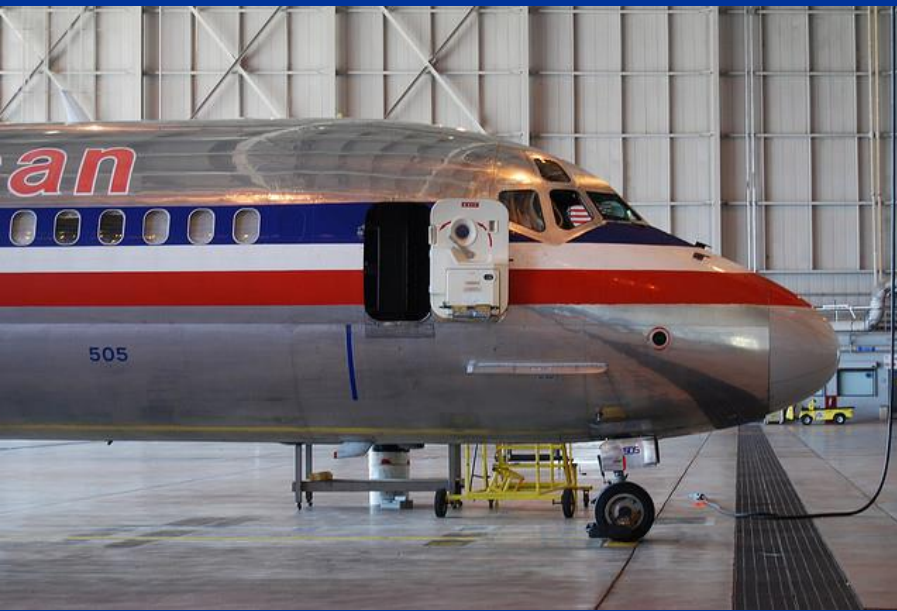




09.22.2005 13:01



Who Runs The Show At Hijacked Planes On The Ground





09.22.2005 13:02

The TARU Response Truck



- Cameras
- Listening Devices
- Tools
- Battery's
- Ballistic Vests + Helmets





07.08.2013 09:42



07.08.2013 09:42



07.08.2013 09:42



07.08.2013 09:42



07.08.2013 09:41

Barricades Can Be Anywhere



Housing Development



If a Barricade takes place in a location where we can't operate from the truck, TARU has two (2) portable Hostage Phone Systems we can set up anywhere.





NYC Housing Project

Street Set Up

We May Be Asked To Stand By

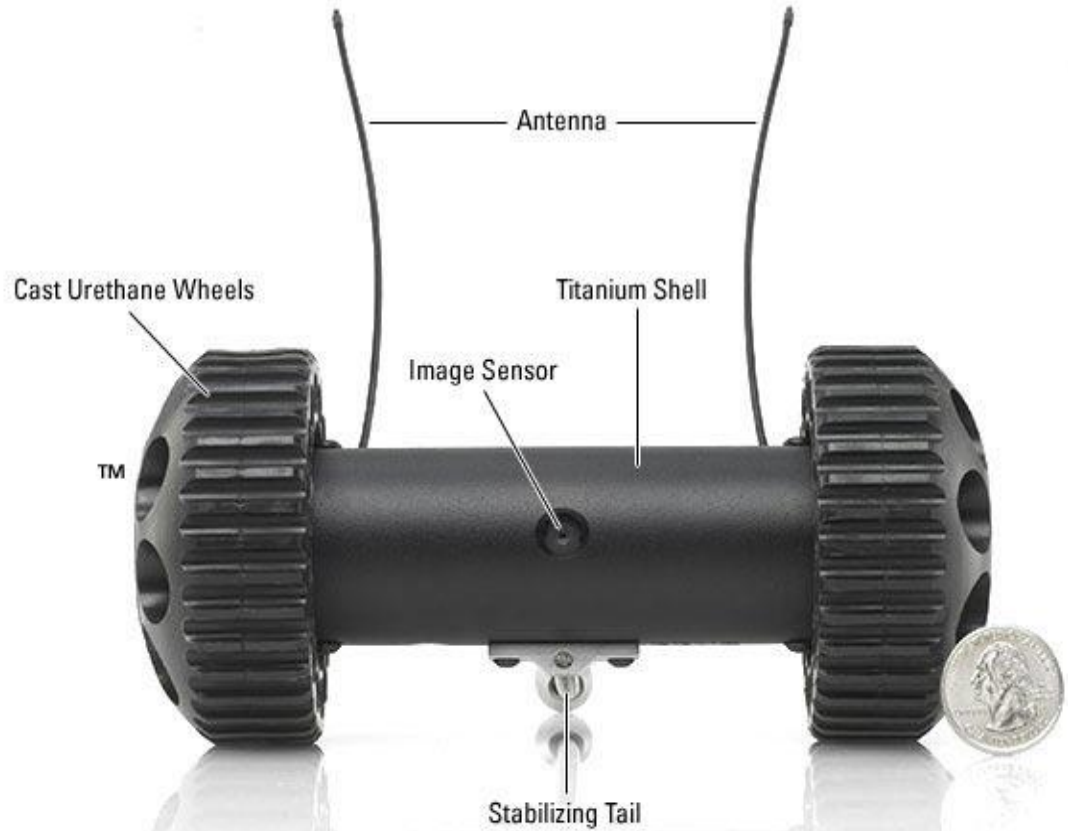


Equipment ESU May Ask For

- Recon Scout
- Pole Camera
- Fiber Optic Camera
- I-Robot
- Armadillo



Recon Scout



Performance

Indoor range: 100 ft/30m

Outdoor range: 300 ft/91m

Speed: 1 fps/0.3mps

Drop shock resistance: 30 ft/9.1m vertical

Throw shock resistance: 120 ft/31.4m horizontal

Mechanical Specifications

Length: 7.375in/187mm

Shell Diameter: 1.5in/38mm

Wheel Diameter: 3in/76mm

Self-Balancer Length: 4in/102mm

Weight: 1.2lb/544g

Image Sensor

Black and white

Excellent low light sensitivity: 0.0003 lux

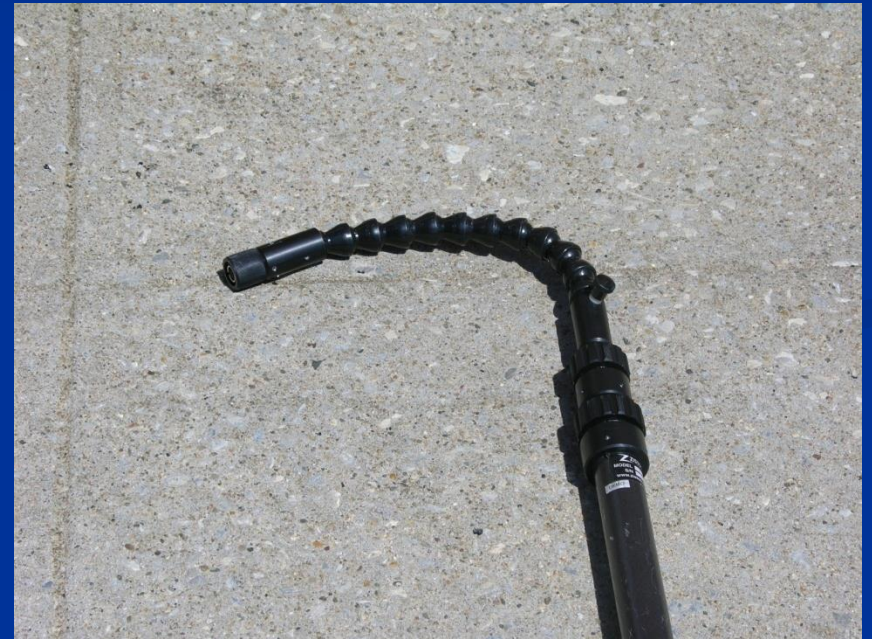
Field of view: 60 degrees

Framerate: 30 frames per second

POLE CAMERA



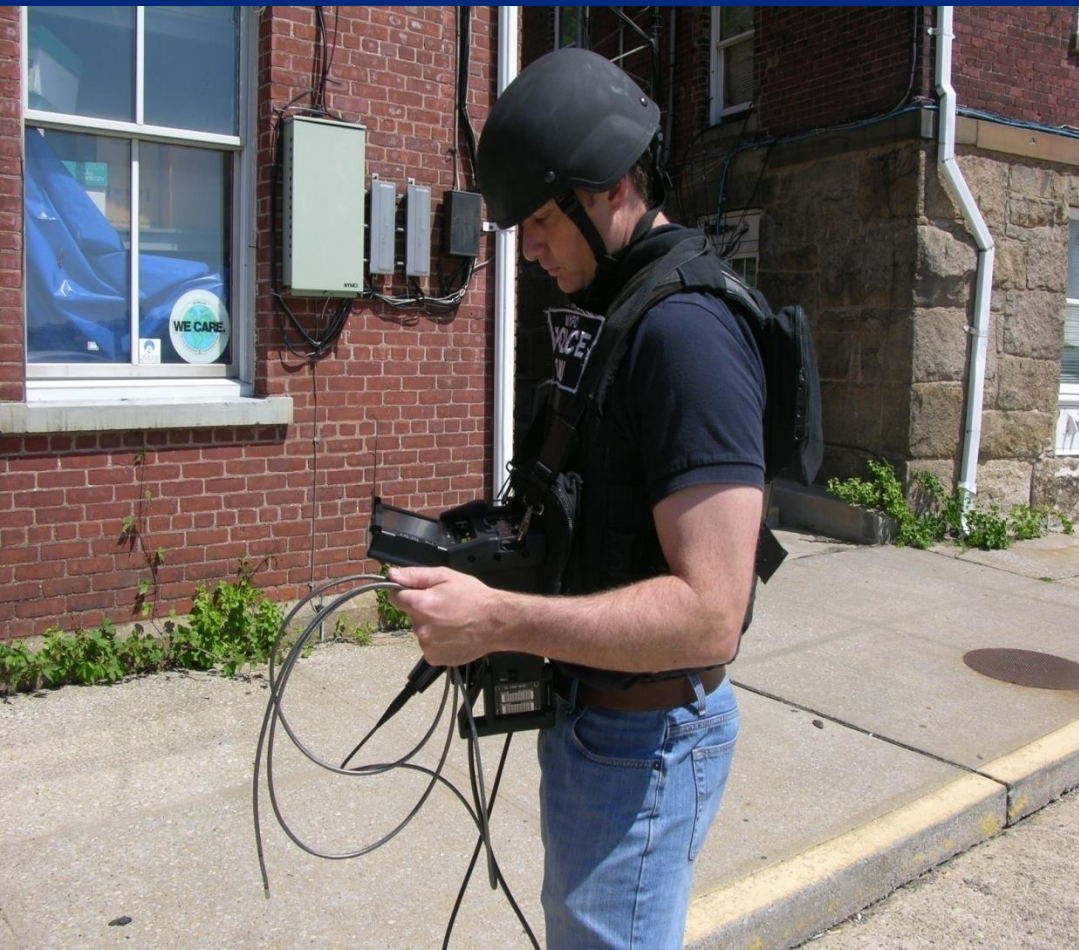
Pole Camera



Fiber Optic Cameras



The Fiber Optic Camera



Fiber Optic Camera Uses





210

Negotiator





It goes into areas where other people won't have to risk their safety.”

She climbs steps

Its Got All The Bells And Whistles



The TARU Tech. Controls The Robot.



TARU

iRobot



iRobot[®]
210 Negotiator[®]

Operator Control Unit (OCU)



TARU

Here's What's Really Cool!



HNT

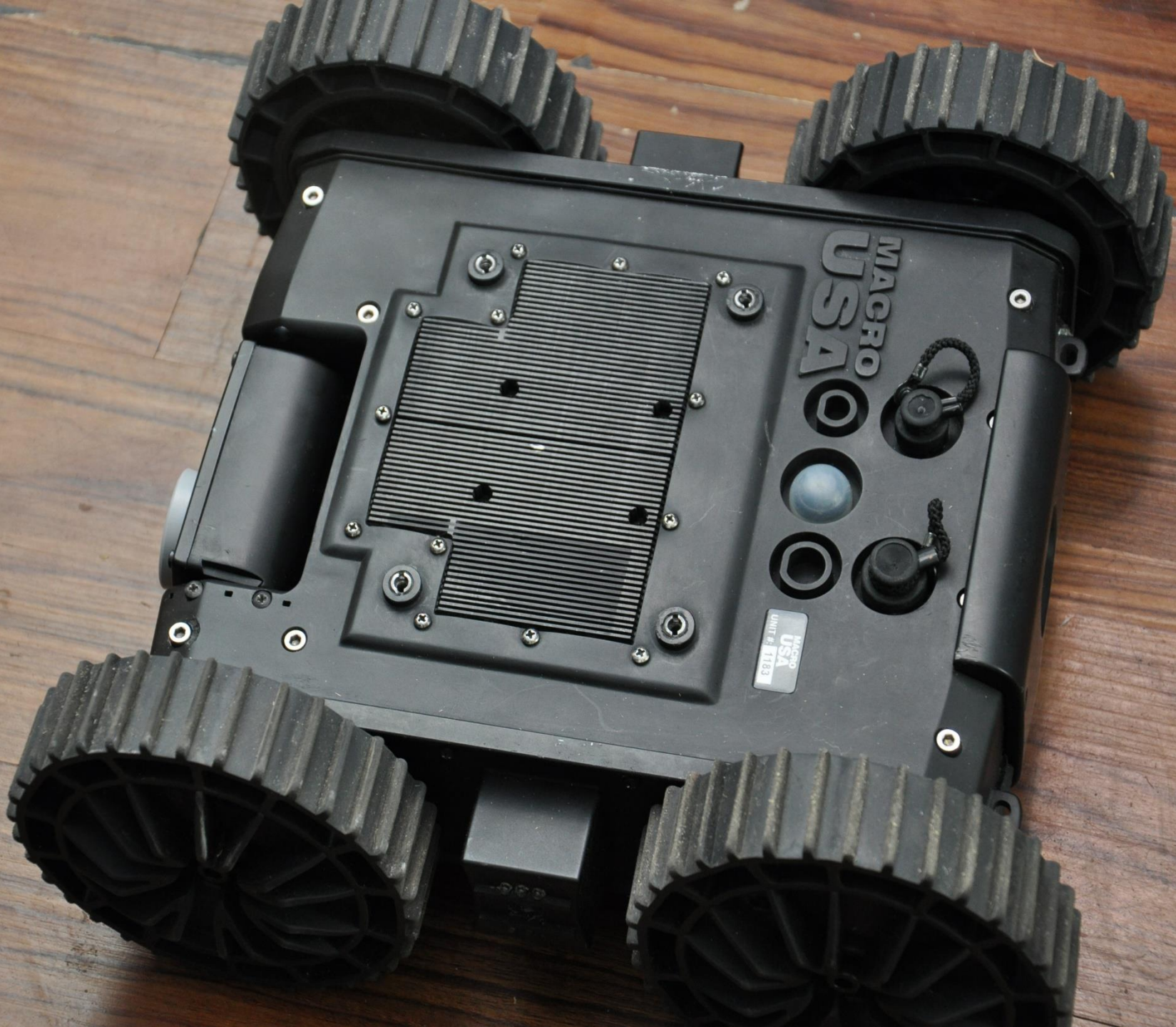
PTT = Push To Talk

PTT



Negotiator Audio

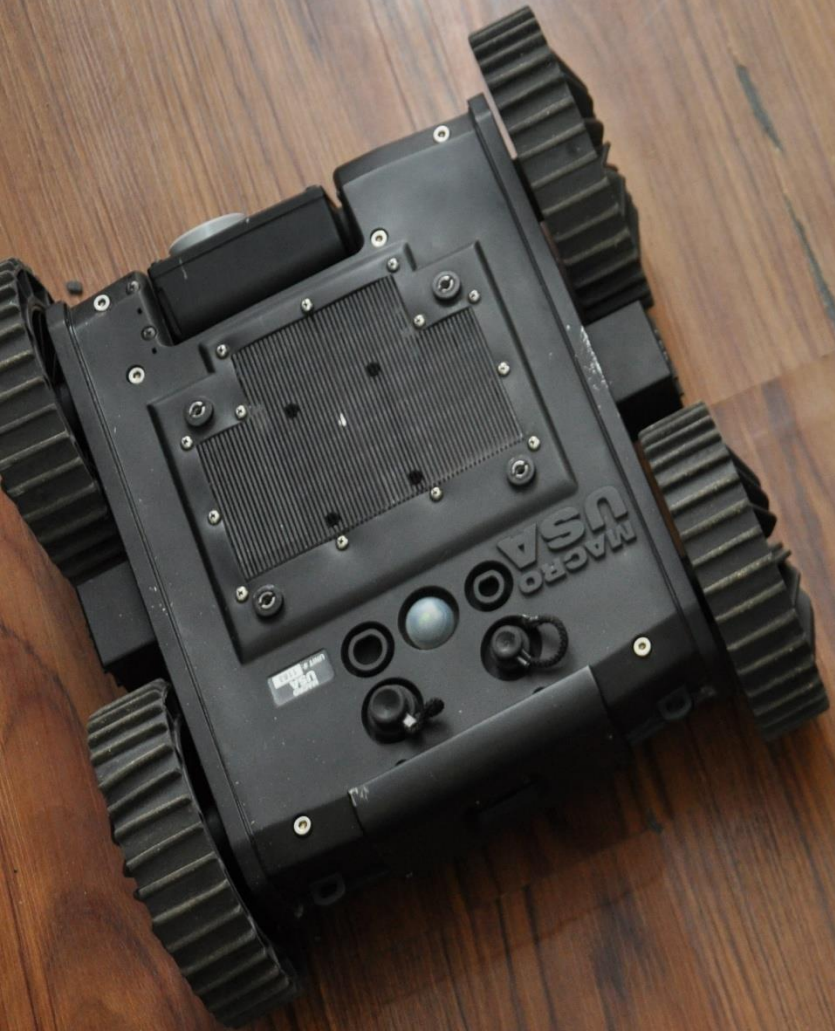




MAGPRO
USA

MAGPRO
USA
UNIT # 1183





What's Going On, On The Scene?

Detective Bureau



What's Going On With Other Agencies ?

July 9, 2013, we are in the 75 Precinct at a barricaded perp job. This perp is the guy who shot the cop on July 4, 2013. Everybody is on scene.

A new Captain who recognized me from teaching the Captains Orientation , pulled me aside and asked

WHAT AM I MISSING?



I/C 's Check List

- Notify Communications I'm Here
- Set Up An Outer Perimeter based on the Inner Perimeter
- Start Closing Streets
- Talk With Detectives
- Talk With TARU
- Have A HOSPITAL CAR Pointing In Right Direction
- What's This I/C Missing?????

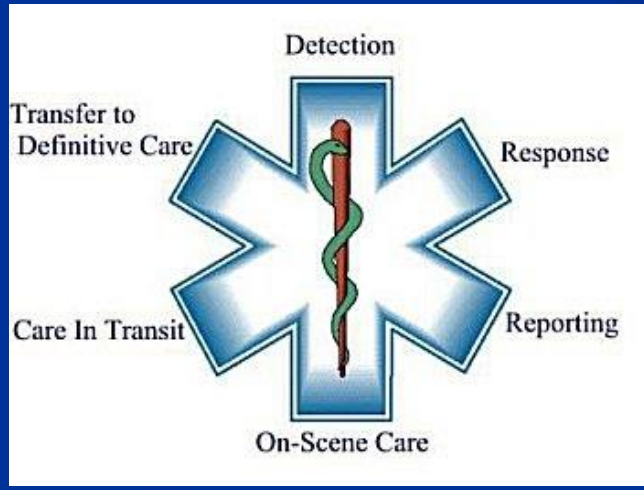


FDNY EMS Standby

- EMS Signal 10-43
- You Get A EMS Supervisor
- You Get A Basic Life Support Ambulance
- If the EMS Supervisor feels there is potential for more injuries
(# of Cops, # of Hostages, # of Perp's)
he or she will call for more help.



You EMS People Can Help



EMS Call History Premise Search

- Has EMS Ever Responded To This Address ?
- When Did EMS Respond To This Address ?
- What Was The Call ?
- Is The Patients Name The Name Of The Subject ?
- What was wrong with Patient ?
Diabetic, Paranoid Schizophrenic or other conditions which could account for the Patients behavior if the call is an Barricaded EDP.



NDC 0185-0134-01

Reserpine Tablets, USP

0.25 mg

Rx only
100 Tablets



SANDOZ

Each tablet contains: Reserpine 0.25 mg
Usual Dosage: See package insert.
Store at 20°-25°C (68°-77°F) (see USP Controlled Room Temperature). Protect from moisture. This is a bulk package. Dispense contents with a child-resistant closure (as required) and in a tight, light-resistant container as defined in the USP. **KEEP TIGHTLY CLOSED. KEEP THIS AND ALL DRUGS OUT OF THE REACH OF CHILDREN.**
Sandoz Inc., Princeton, NJ 08540



08-2007M

Previous Response For

Stabbing



Acid Burn



Gun Shot Wound





POLICE
EMERGENCY
NYPD
SQUAD

POLICE

POLICE DEPARTMENT
CITY OF NEW YORK

5777

NYPD

07.08.2013 09:05

Complications

**EXPECT THE
UNEXPECTED**

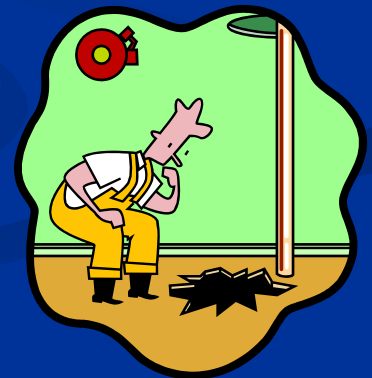
EDP Wants To Turn On Gas



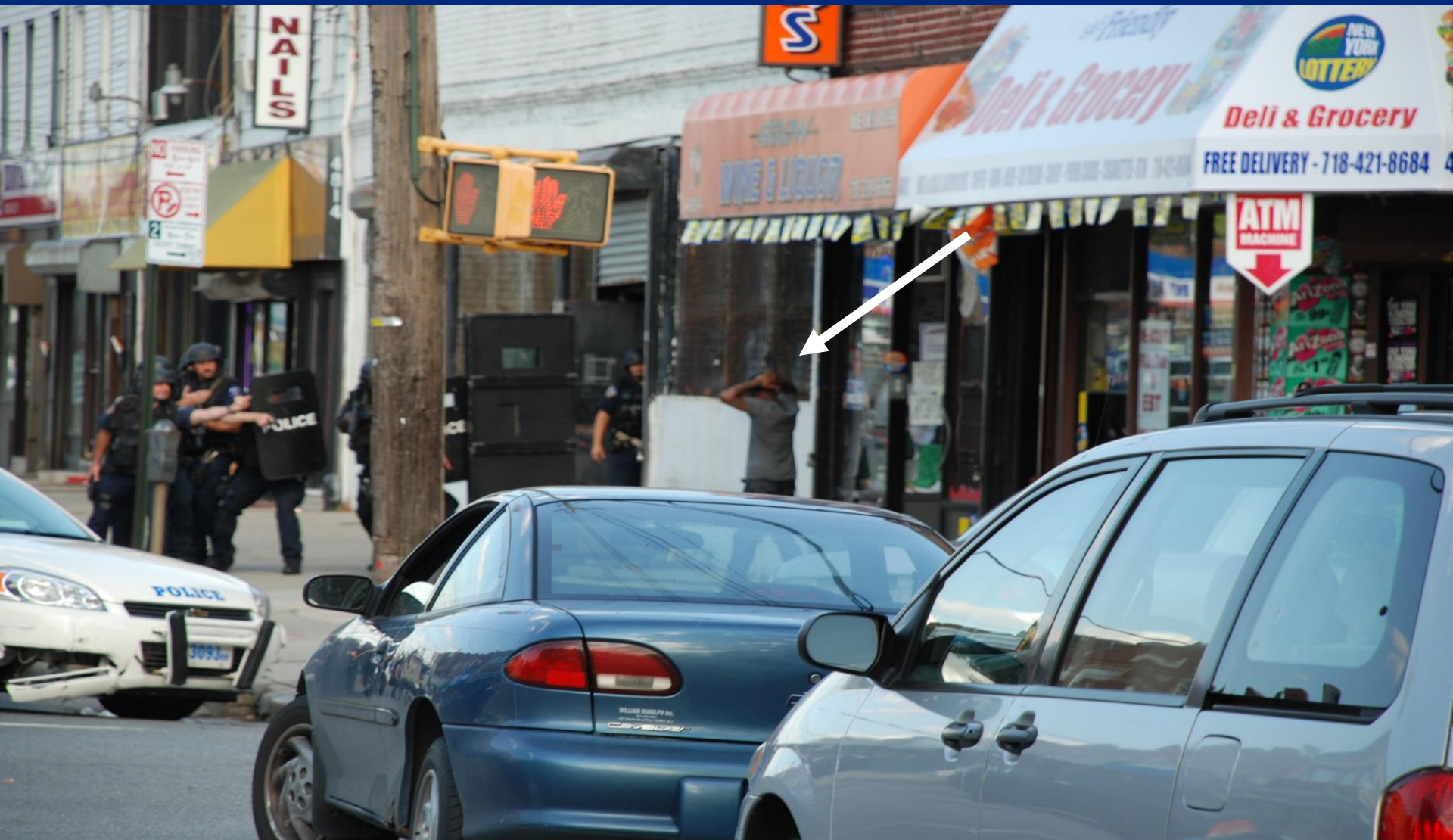
Con-Ed will be called to turn off gas.



New York City Fire Department



Good Outcome People Being Arrested, No One Hurt



Non-lethal weapons, also called less-lethal weapons,^[1] less-than-lethal weapons, non-deadly weapons, compliance weapons, or pain-inducing weapons are weapons intended to be less likely to kill a living target than conventional weapons



Water Distracter

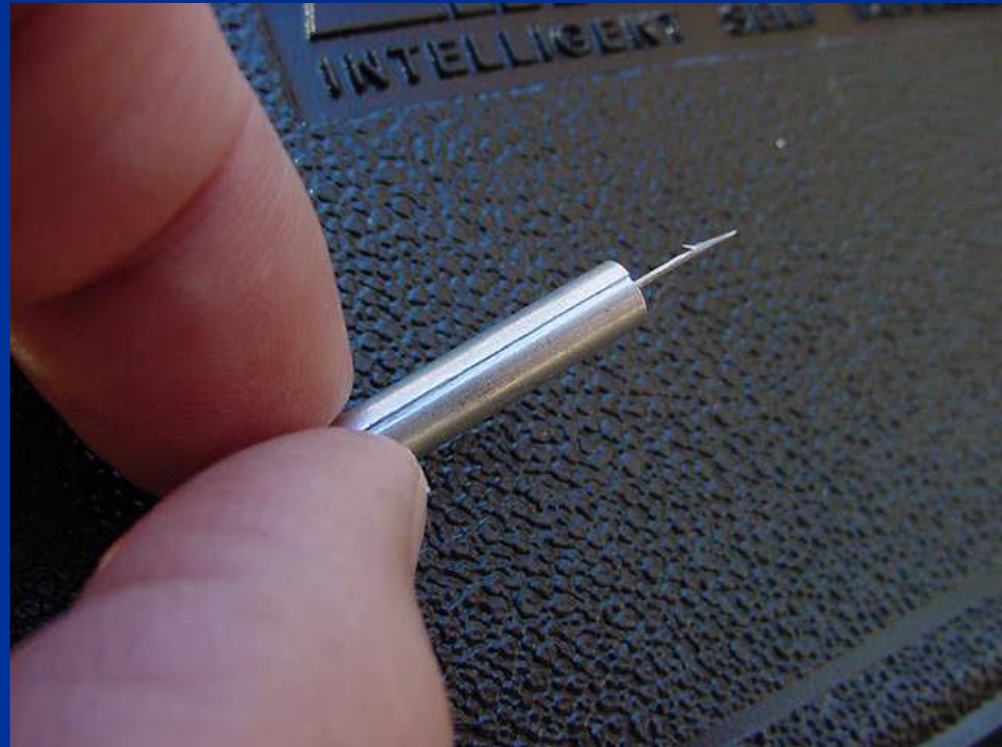


TASER



The EDP and or Perpetrator has been shot with a TASER

1. The EDP and or Perpetrator is now your Patient.
2. The Taser Hooks are considered a Foreign Body.
3. DO NOT REMOVE THIS HOOK. THE EMERGENCY ROOM WILL REMOVE IT
4. The Cop who shot him, is going to need the Hook and Wire for his report.



I Am Not A PARAMEDIC.....Yet!

I Have Been A Cop For 28 Years

I Have Worked on Ambulances since 1977

This is my opinion

Opinions are like Assholes

Everybody has one

I spoke to a Taser Instructor

1. Some Tasers put out initially 55,000 Volts on impact.
2. Then about 1200 Volts per pulse but regulates increases and decreases on its own depending on NEURO MUSCULAR INCAPACITATION.
3. On average it pulses 20 times per second.

Neuromuscular Incapacitation (NMI) occurs when a device is able to cause involuntary stimulation of both the sensory nerves and the motor nerves.

The Medics I work with do not remove the darts, hook the Pt up to an EKG and maybe start a line. Protect yourself (EMS) against a law suit.

Its Not Good To Taser A Guy Who Has Gas Poured All Over Him





Excuse Me Sir, before I
Taser You, I need to know
if you have a Pace Maker

Why Do I Tell You This?

When the patient who has
been the subject of a Taser
goes into cardiac arrest,
wonder why?

Do electrical stun guns (TASER-X26) affect the functional integrity of implantable pacemakers and defibrillators?
[Lakkireddy D¹](#), [Khasnis A](#), [Antenacci J](#), [Ryshcon K](#), [Chung MK](#), [Wallick D](#), [Kowalewski W](#), [Patel D](#), [Mlcochova H](#), [Kondur A](#), [Vacek J](#), [Martin D](#), [Natale A](#), [Tchou P](#).

Author information

Abstract

AIMS:

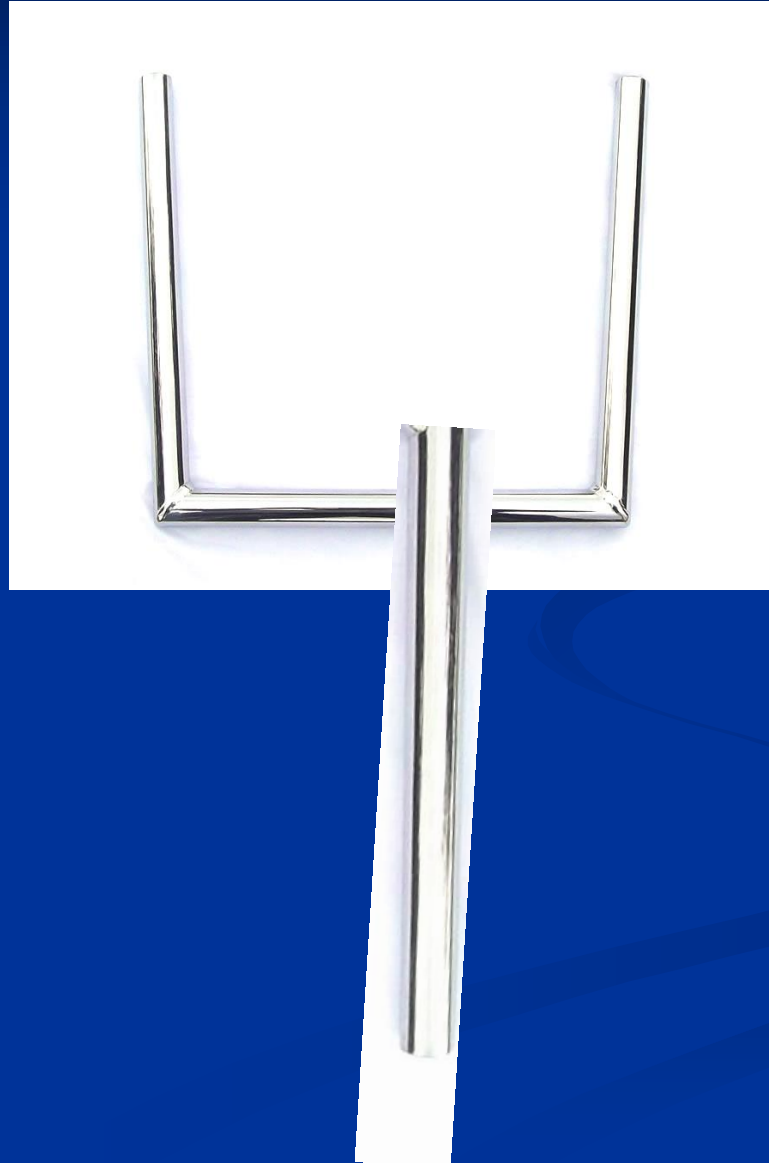
High voltage electric current can adversely affect pacemakers (PM) and implantable cardioverter-defibrillator (ICD). The standard shock from an electrical stun gun (TASER- X26, TASER International, Scottsdale, AZ) consists of a 5-s long application of high voltage, low current pulses at 19 pulses per second. Its effect on the functional integrity of PM and ICDs is unknown.

CONCLUSION:

Pacemakers and ICD generators and leads functions were not affected by the tested standard 5 s stun gun shocks.



U-Bar



Restraint Straps



Full Body Restraint Bag



On Your Ambulance



Hostage Negotiation Technology



LTR

ADVANCED LINE SIMULATOR
DPO-231 CAT
115V 60Hz
OFF ON
USE THIS BOX FOR
DO NOT BRING PL



DIRECT-LINK II CRISIS COMMUNICATION SYSTEM

OBSERVATION NEGOTIATOR CHANNEL AUDIO THROW PHONE COVERT AUDIO THROW PHONE COVERT VIDEO	CALL NEGOTIATOR ALERT RESET	AC POWER POWER ON BATTERY GOOD LOW CHARGE	CAMERA SELECT LEFT FRONT RIGHT REAR CYCLE	TELEPHONE CONTROL TELEPHONE CONNECTED TELEPHONE DISCONNECTED
EXTERNAL POWER 120 VAC 12 VDC	NEGOTIATOR ALERT RESET	TELEPHONE CONTROL TELEPHONE CONNECTED TELEPHONE DISCONNECTED	TELEPHONE CONTROL TELEPHONE CONNECTED TELEPHONE DISCONNECTED	TELEPHONE CONTROL TELEPHONE CONNECTED TELEPHONE DISCONNECTED

EXTERNAL LAND LINE
EXTERNAL LAND LINE
U.S. Patent 5,482,246

Electronic Component
Do Not Drop

MDS-1 TACTICAL NETWORKING

Various ports and connectors on a black electronic device.

THIS BOX
NOT BRING D

DIGITAL LINK II CRISIS COMMUNICATION SYSTEM

OBSERVATION UNIT

THROW PHONE

OFF HOLD WHEN

CALL

AC POWER

POWER ON

BATTERY

GOOD

LOW

CHARGE

50/60 Hz

NEGOTIATION CHANNEL AUDIO

THROW PHONE COVERT AUDIO

THROW PHONE COVERT VIDEO

REMOTE AV INTERFACE

HOSTAGE PHONE

EXTERNAL POWER

120 VAC

12 VDC

COACH

AUDIO ALERT

TACTICAL COMMAND UNIT

REMOTE TCU

LOCAL UNIT

TELEPHONE CONTROL

TELEPHONE CONNECTED

TELEPHONE DISCONNECTED

NEGO TIATOR

ALERT RESET

MULTI-CABLE EXTENSION

CELLULAR

LAN LINE

EXTERNAL LAND LINE

EXTERNAL LAND LINE

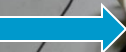
JACOB JENSEN

WARNING!

These equipment, with accessories, microprocessors, and software, are classified as "Export Controlled Items" under the Export Administration Regulations (EAR) and may be subject to export controls. For more information, please contact the manufacturer.

U.S. Patent 6,442,240

LI15-2012060001







Mic On
Mic Off





HNT Truck Arrives On Scene

Questions to Ask

1. Are we talking to him/her?
2. How are we talking to him/her?
3. Cell Phone or Hard Line Phone
4. He or She alone? Hostages?



The Throw Phone





07.08.2013 09:43



07.08.2013 09:44



07.08.2013 09:44

- Jumpers
- Perpetrators in windows
- Evaluation of the scene.

Aviation Helps Out Too



Microwave Receiver

The Cell Phone Dilemma

- You are **negotiating with a subject on a cell phone**, you believe he is in the apartment that Emergency Service is outside of with their Ballistic Shields and heavy duty weapons.
- **None of the Cameras** we are using to see into the apartment **see the subject**.
- Negotiations are not working, time to make a Tactical Entry.

What's the number 1 question ?

Is The Subject In The Location That You Are About To Breach?



Ping The Phone

Pinging a cell phone is finding out what cell tower their phone is in. This can be used to locate a person that you know has the cell phone. This is used by law enforcement on a regular basis.

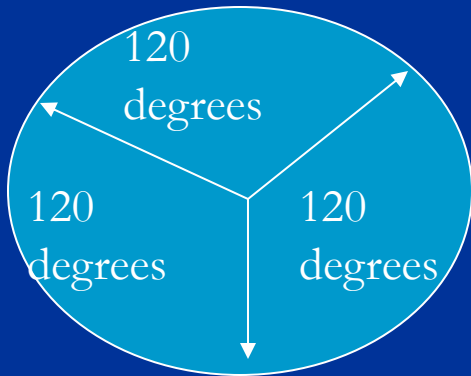
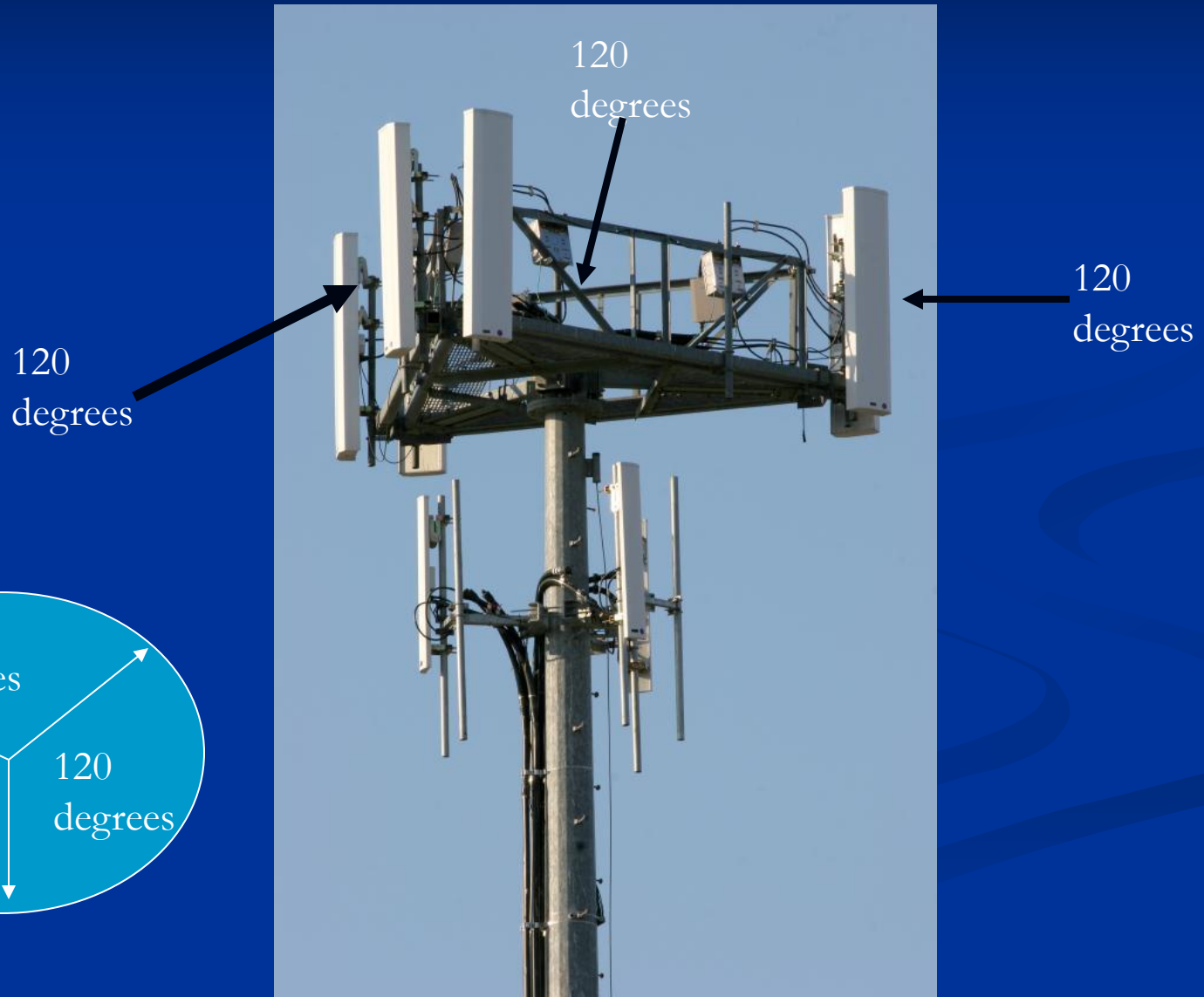
Usually the information is provided by the cellular provider and you have to have an exigent circumstance at the time.

In 911 systems the location is broadcast with the call. If a bad guy is carrying a cell phone the phone is constantly sending signals to the closest cell tower, even if the phone isn't in use. The location of the cell tower will tell you that the person is within a certain range. When the person moves they can be tracked by which cell towers the signal is bouncing to.

Now cell phones come with GPS so your exact location can be traced.



Cell Phone Tower



Specific Location Vs. Cell Site

Verizon : *Can Give You Cell Tower* (Real Time Tracking Tool)

T-Mobile: *Can Give You Phone Location*

Sprint: *Can Give You Phone Location*

Metro – PCS: *Can Give You Cell Tower*

Cingular \ AT+T: *Can Give You Phone Location*

Boost Mobile: *Can Give You Phone Location*

1 Meter = 3 Feet

What's This Do For ESU 3



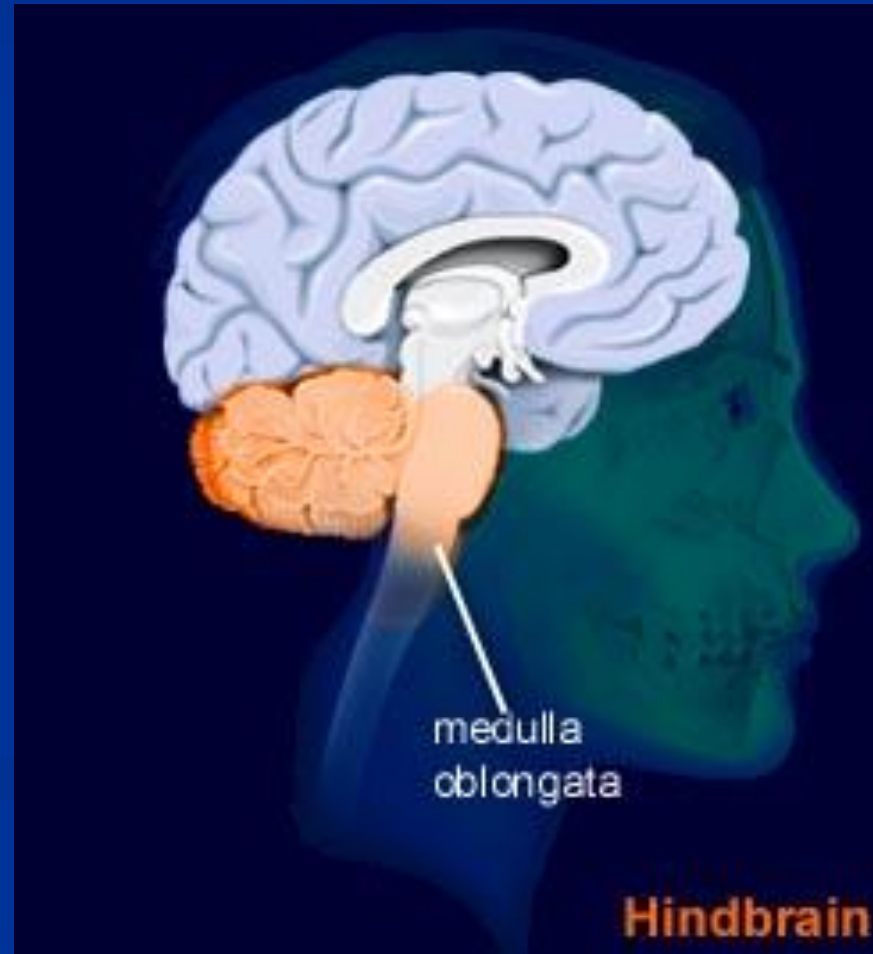
- Right Phone Number
- HNT is talking to subject at that phone number
- The Ping is for that phone



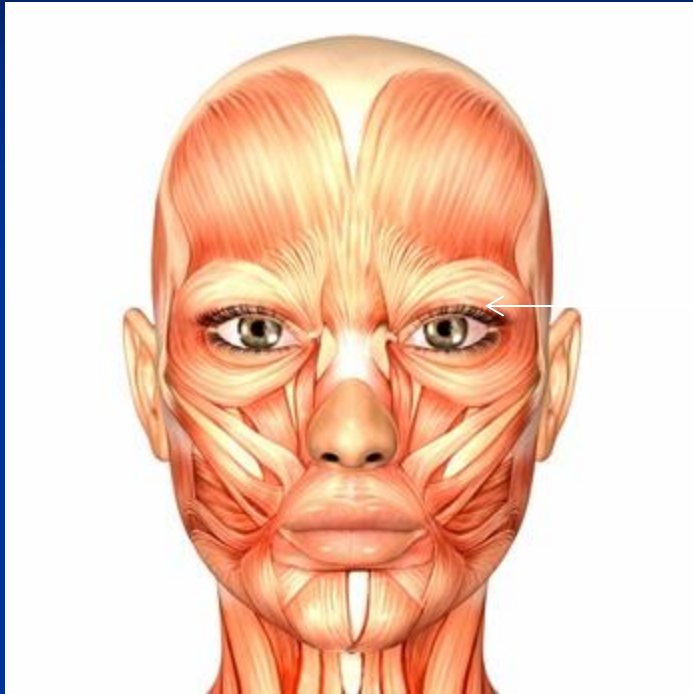
The Head Kill Shot



The **medulla oblongata** is the lower half of the brainstem, which is continuous with the spinal cord. The medulla contains the cardiac, respiratory, vomiting and vasomotor centers and so deals with the autonomic (involuntary) functions, of breathing, heart rate and blood pressure.

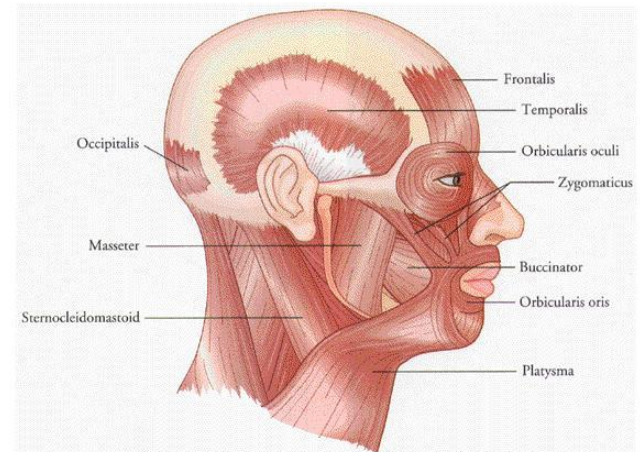


The Kill Shot Continued



Aim Here

Jackson Beatty, Principles of Behavioral Neuroscience. Copyright © 1995 Times Mirror Higher Education Group, Inc., Dubuque, IA.



The Muscles of the Human Face. Figure 11.2

Stuart N. Goldstein
EMT – NYPD TARU Retired

Stuart.Goldstein866@GMail.Com

Skype: Stuart.Goldstein866

Be Safe - Don't Be Sorry